

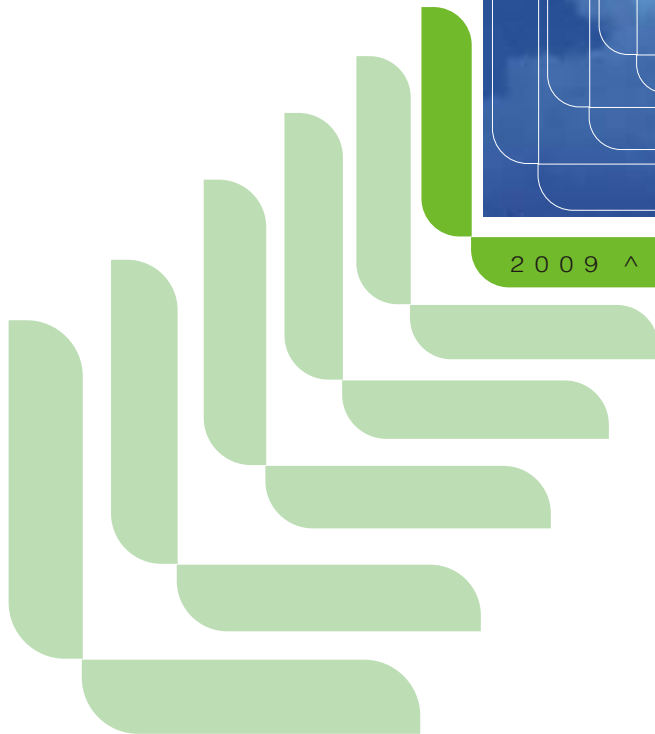
ANNUAL REPORT 2008-09



ANNUAL REPORT 2008-09



2009 ^



Centre for People's Forestry

Mission

Promoting capacities, diversifying skills and enhancing livelihood security of the marginalized sections among forest dwelling and dependent communities.

Title : Annual Report 2008-09

Compiled & Edited by : P. Bruslin Mento & Diana Joseph

Published by : Centre for People's Forestry, Secunderabad
06 August, 2009

Copies : 500

Layout, Design & Printing : D&Dee - 9440726907

Contact : **Centre for People's Forestry**
12-13-483/39, Street No.14, Lane 6
Nagarjunanagar Colony, Tarnaka
Secunderabad - 500017, A.P., India
Tel./Fax: +91 - 40 27154484
Website: www.cpf.in

Overview

Aug 2008 - July 2009

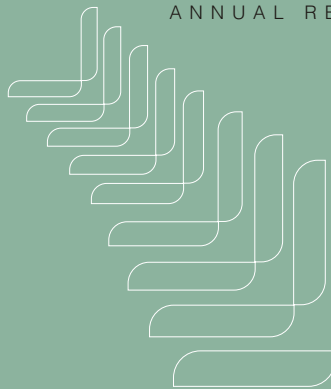
Year 2008-09 may be termed as the “year of Organisation Development (OD)” for CPF. Starting with an external evaluation of its work, over the past five years, in programmatic, organisational and financial aspects, CPF moved on to have a strategic planning exercise, to making required adjustments as a follow up, to develop new proposals for the next phase of core programme followed by the appraisals of the same by the resource agencies, and finally to build capacity of team and partners in planning, monitoring and evaluation. Creation of a new wing viz. Information Exchange and Communication with dynamic and enthusiastic team, to connect CPF with the wider world in a more organised and professional way is one major step taken during the year in strengthening the organisation. Reviewing and revising the system of “programme review” in CPF is another step towards strengthening the organisation. During the year, CPF could successfully accomplish the objectives of various projects, complete three studies and bring out reports. Contribution to the Forest Rights Act 2006 implementation process and entering into collaboration with the UKIERI climate change impact study project are other programmatic developments at CPF during the year. The year also witnessed a couple of Induction Programmes for the new comers, which is a maiden initiative for the organisation. As regards advocacy, an e-campaign was launched titled I Vouch for Community Forestry.

External evaluation: the evaluators appreciated the strategy of working in partnership with the local NGOs, the efforts of lobbying and advocacy on several matters with positive results, the understanding and functioning of Vanasamakhyas at different levels and the appropriateness of various livelihoods initiatives taken up. However, concerns were expressed with regard to the idea of “resource centres” anchored at some partner NGOs, the linkage between the local Vanasamakhyas and the member VSSs and on the programme monitoring aspects. It was observed that the resource centres could not make much headway on their own, and functioned more or less as project implementing agencies as per the mandate given by CPF. A separate financial evaluation commissioned by SDTT noted the good practices being followed by CPF and provided suggestions to improve the systems related to monitoring at partner level.

Strategic Planning: the strategic planning exercise helped look into future and define programme wise focus areas for work in the next phase. In addition, it also facilitated the OD exercises that help a critical review of the existing structures and systems and streamline the same for effective implementation of programmes. A strategic plan document for the period 2009-15, revised organogram, collectively defined measures for strengthening the systems, a mobility policy and the team with renewed motivation and enthusiasm are the outputs of this exercise. The strategic plan document has clearly defined the vision, mission, values, goal, programme areas and the outcomes towards which CPF team will be contributing in the near future. Participatory Forest Management with all its nuances, Sustainable livelihoods of forest and dwelling communities and Policy advocacy are chosen as the thrust areas for CPF work in future.

Planning, Monitoring and Evaluation: the evaluation identified 'programme monitoring' as feeble area of CPF's functioning. Hence, capacity building to team as well as partner NGOs on planning, monitoring and evaluation was taken up with the help of external facilitators, taking one of the newly approved projects as an example for practical exercises.





Programme Review: previously, progress review at CPF used to be taken up project wise. Taking cue from the critical views expressed, the system was revised, after the first round of strategic planning exercise. The staff team was reorganised as per the identified thrust areas and the review now is being taken up “programme wise”. This is helpful in keeping track of the organisation objectives more precisely.

FRA: active participation in the process of implementation of Forest Rights Act in one forest range along with partner NGO, ASDS, besides organising State level consultations on the status and process of implementation of FRA enabled CPF to identify gaps and lapses and convey to the concerned officials at State level.

UKIERI: funded jointly by the governments of India and the UK, the UK-India Education and Research Initiative aims to develop sustainable collaborations in research areas through a range of programmes of mutual interest to both the countries. This project titled “Impact of Climate Change on the Water Cycle and Ecosystem Functioning at the River Basin Scale” proposes to work in the Manjira river basin. Partners of this project are Liverpool University - UK, IISC - Bangalore and IIT Delhi. CPF acts as a collaborator with the project partners and is responsible for the field level data collection through the partner NGO, Sevasangam, and coordination with the research team. It is expected that by participating in this study, the CPF team can get acquainted with the research on climate change and its impact on the livelihoods of vulnerable sections of communities.

Induction Programme: to provide sufficient information to the new staff to help them discharge their responsibilities with ease in the new environment, Induction Programme to the new staff of CPF was conducted. This first time initiative involved formal presentation general procedures, organisation, systems & structures, finance, administration and programmes, besides interaction with the staff of each wing within CPF. The inductees were also taken to a field trip and to Solidarity Institutions.

E-campaign: CPF launched an e-campaign (<http://communityforestry.cpf.in/>) titled “I Vouch for Community Forestry”, seeking attention from the Ministry of Environment & Forests for seven exigencies: Involvement of civil society organisations in REDD discourse, Creation of Community Forestry as a separate stream in Forest Departments, Creation of separate training and research institute for Community Forestry, Revisiting FDA and strengthening the same, Addressing sustainability of community institutions in forestry, Creation of Foundations in protected areas and Giving more attention to Forestry within the MoEF. A separate communication seeking these exigencies was sent to the Minister of State, MoEF. Subsequently, the copy of the letter sent to the Minister was shared to other officials in the MoEF and Forest Departments for information. Friends in development and other sectors across the country were requested to send mails on the subject to the MoEF.

The details regarding the accomplishments of ongoing projects and the studies are provided in the subsequent sections of the report.

I take this opportunity to thank the Managing Trustee and other trustees, Officials of Forest Department and other departments for readily extending cooperation and support to all CPF initiatives, besides providing constructive suggestions in developing new interventions. Partner NGOs (current and previous) and representatives of Vanasamakhyas have put forth relentless efforts in translating the ideas into actions. Representatives of Resource Agencies were kind in being critical in their appraisals, which really helped CPF in streamlining its programmes and made the team stronger. Their contributions are fondly and gratefully acknowledged.

Dr.D.Suryakumari

Director

17-07-2009

Acronyms

ALU	Appropriate Land Use
AP	Andhra Pradesh
APCFM	Andhra Pradesh Community Forest Management
APFD	Andhra Pradesh Forest Department
APM	Annual Partners' Meeting
BoT	Board of Trustees
CBOs	Community-based Organisations
CFM	Community Forest Management
CM	Chief Minister
CPF	Centre for People's Forestry
CSA	Centre for Sustainable Agriculture
CWS	Centre for World Solidarity
DET	Departmental Extraction of Timber
EDC	Eco Development Committee
FD	Forest Department
FDA	Forest Development Agency
FGLG	Forest Governance Learning Group
FPI	Forest Produce-based Initiatives
FRA	Forest Rights Act
GO	Government Order
GPS	Global Positioning System
HR	Human Resources
IEC	Information Exchange and Communication
IISc	Indian Institute of Science
IIT-D	Indian Institute of Technology - Delhi
INRG	Institute for Natural Gums and Resins
MoEF	Ministry of Environment and Forests
NDF	National Dalit Forum
NGO	Non-Governmental Organisation
NREGA	National Rural Employment Guarantee Act
NSTR	Nagarjuna Sagar Tiger Reserve
NTFP	Non-Timbre Forest Produce
OD	Organisation Development
OICPL	Oriental Insurance Corporation Pvt. Ltd.
PFM	Participatory Forest Management
PLHA	People Living with HIV & AIDS

REDD	Reducing Emissions due to Degradation and Deforestation
RRC	Regional Resource Centre
SF	Sustainable Forestry
SL	Sustainable Livelihoods
UKIERI	UK India Education and Research Initiative
VFC	Village Forest Committee
VSS	Vana Samarakshana Samithi

Contents

Overview

Acronyms

1.	The Organisation	1
2.	Participatory Forest Management	14
	a. Vanasamakhyas and VSSs	
	b. Orissa Forestry Programme	
	c. Jharkhand Forestry Programme	
3.	Sustainable Livelihoods	17
	a. Forest Produce-based Initiatives	
	b. Appropriate Land Use-based Initiatives	
	c. Other Economic Activities	
4.	Policy Advocacy	19
5.	Cross-cutting Programme	20
	a. Gender and HIV & AIDS Concerns	
6.	Overarching Programme	21
	a. Information Exchange & Communication	
7.	Plans for Future	23
	a. Promoting sustainability of Community Forest Management through VSS networks in Andhra Pradesh	
	b. Promoting livelihoods security of Forest and dwelling communities through multi stakeholder/sector collaborations in Andhra Pradesh	
	c. UKERI Collaborative Project on Climate Change	
	d. Forest Governance and Learning Group India - Social Justice in Forestry	
	e. Promoting Cross Learning in Community Forestry in India (KIC)	
8.	Events	28
	a. Organised	
	b. Attended	
9.	Visitors this year	31
10.	Financial Report	32
11.	Financial Partners	50
12.	Board Members	51
13.	Publications	53
14.	Team CPF	55



1. The Organisation

Centre for People's Forestry (CPF) was registered as a Public Charitable Trust (vide document no.83/2002) on 6th August, 2002. It is a non-profit, non-political and secular organisation working for the development of people of India, especially for the deprived and marginalised sections irrespective of religion, race, caste or creed. CPF is also registered under section 12A of the Income Tax Act (ITA) with effect from the date of its registration vide letter F.No.Hqrs.I/4/12A/DIT(E) dated 23rd April, 2003.

Prior to 2002, CPF functioned as an autonomous wing within Centre for World Solidarity (CWS). CPF, as an organisation, came into existence to make the deserving forest dwelling/ communities realise their entitlements within the framework of forest policies, especially the 1988. CPF strives to develop and ground sustainable forest management mechanisms for enhancing livelihood security of the marginalised sections, especially women, tribals, Dalits and other resource poor among these communities. Placing livelihood enhancement of the communities affront in all its initiatives, CPF has been identifying and attending to the specific needs of the communities and NGOs in Andhra Pradesh (AP) and Orissa as well as undertaking strategic field works to enter into Jharkhand.

Approach

CPF follows a constructive, critical and collaborative approach for all activities and projects. On one hand, it forms a network of local NGOs and Community-based Organisations (CBOs) to enhance sustainable means of livelihood in the project area, and on the other, it liaisons with the State and National Governments, especially the Forest Department (FD) and the Ministry of Environment and Forest (MoEF).

Before planning an intervention, CPF carries out action research to understand the situation at all levels, identifying gaps and clearly defining the roles to be played by CPF and other stakeholders in the intervention. It disseminates learning and data through documentation and workshops. A policy of transparency in all activities has helped CPF to create a healthy work environment which makes it easier to enlist support from Government, NGOs and research and academic institutions to realise various project goals. CPF also engages bilateral, multilateral and other aid agencies, which extend support to the projects through Government/non-governmental organisations and the corporate sector, to help realise its objectives.

Vision

The marginalised sections (women, tribals, Dalits and other resource poor) among forest dwelling and dependent people manage and utilise forest resources sustainably with due regard to conservation of biodiversity and attain livelihood security through skill diversification.

Mission

Promoting capacities, diversifying skills and enhancing livelihood security of the marginalized sections among forest dwelling and dependent communities.

CPF believes that sustainable development, in general, and sustainable forest management in particular, is possible only through alliances of committed CBOs, NGOs, academicians, researchers, individuals, corporate and government officials.

Objectives

- To bring about a shift from the dominant ideas that have governed the relationship between the state and the people with respect to all natural resources, including forest resources.
- To emphasise people's knowledge in conservation and management of forest resources and assist in initiatives taken to strengthen people - particularly tribal communities - and enable them to play an effective role in conservation and management of forest resources.
- To critique, collaborate and influence the Government and the Forest Department at different levels to put people at the centre stage in the use, conservation and regeneration of forest resources.
- To study and develop methodologies that will ensure equity to Dalits and tribals and equality of gender in all the initiatives in the forestry sector and devise them into specific programmes for implementation with full participation of people.
- To develop and implement programmes that will recognise the inter-relationship between healthy forests and agriculture on one side and healthy forests and conservation of water and soil on the other.
- To help develop public policies that would establish the primacy of livelihood of forest dwellers and other dependents on forest resources for survival whilst ensuring healthy and sustainable environment.

Shared Values

Participation: Participation at all levels is central to the way CPF functions. The organisational structure of CPF is non-hierarchical and thus has a built-in mechanism to encourage both team spirit and participation of all staff members. The philosophy and central goal of CPF encourage participation of other stakeholders and thus ensure the expression of different points of view.



Transparency: CPF maintains openness in its functioning by proactively making information easily accessible through reports, website and open presentations at the Annual Partners' Meetings (APM). Thus all stakeholders have automatic access to both the programme and financial information in annual reports of CPF. It strives to ensure this practice among its partner NGOs and Vanasamakhyas at the organisation level.

Accountability: It is reflected in how CPF collects and uses data, organises multi-stakeholder platform meetings, produces reports taking independent views on contentious issues, deriving mandate from the Annual Partners' Meetings and sharing information including finance with all concerned. Regular Board of Trustees (BoT) meetings, twice a year, also

involving the staff of CPF, help in making CPF accountable for their functioning to the independent board.

Equity & Equality: CPF always strives to ensure equity and fairness in its functioning. This includes equality in gender relations. CPF also strives to ensure that the changes it proposes to bring out at the community level are equitable. The selection of project locations is done with positive discrimination to the vulnerable and marginalised sections.

Strategies

Networking: Networking with CBOs and their associations, local NGOs and their coalitions, State, National and International NGOs and other civil society actors involved in forestry work is the key strategy of CPF. CPF facilitates formation of networks of concerned CBOs and local NGOs in its project areas to bring in added advantages of opportunities for cross learning and experience sharing and to provide strength for advocacy efforts through collective approach.

Capacity Building: CPF focuses on creating capacity among CBOs and local NGOs on the new and emerging challenges such as sustainable forest management, holistic approach to livelihood security, bio-diversity conservation, bio-fuels, climate change and the global efforts to address such challenges.

Participatory Action Research: CPF carries out action research to understand the situation at all levels, identify the gaps and clearly define the role to be played by CPF and other stakeholders, before planning an intervention and/or taking up a stand on a contentious issue. It strengthens CPF's fact-based advocacy efforts.

Exploration, Piloting, Replication and Mainstreaming: CPF starts an intervention with a pilot initiative and generates learning and data which is shared/ disseminated through workshops, documented reports, etc. This is then analysed and replicated in other locations and/or scaled up in a larger area. Action research continues in these locations and lobbying and advocacy for mainstreaming is taken up, as per need, based on these experiences.

Collaboration: CPF believes in positive, constructive collaboration, especially with the Government agencies for long term sustainability of the programmes taken up. It collaborates with academic, research and technology institutions to build capacities among the staff of CPF and partner NGOs as well as to share its experiences with these institutions and keep them informed of the field level needs and realities. CPF also facilitates and nurtures collaborations among different stakeholders.

Overarching Criteria for All Programmes

Social/Institutional

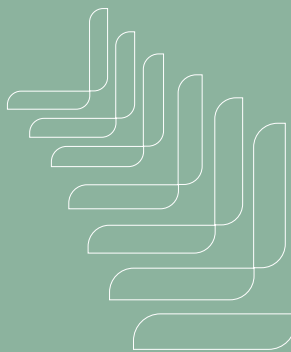
- Equity/Equality (especially of gender) in participation & decision making
- Sensitivity to concerns of HIV & AIDS
- Sustainability of the institutional mechanism
- Mainstreaming concerns of Gender and HIV & AIDS in activities/ projects of CPF as appropriate and where applicable

Economic

- Equitable distribution at community level
- Enhanced incomes at household/ individual level

Environment/Ecological

- Sustainable resource use
- Conservation and regeneration



Goals for Next Six Years (2009-2015)

- Replicable models with regard to community management of forest resources and livelihood security of marginalised sections among the forest dwelling and dependent communities are established in select project locations using appropriate policy and implementation frameworks with a collaborative and integrated approach.
- All CPF interventions are integrated in at least few VSSs/EDCs in the project locations of CPF, for showcasing.



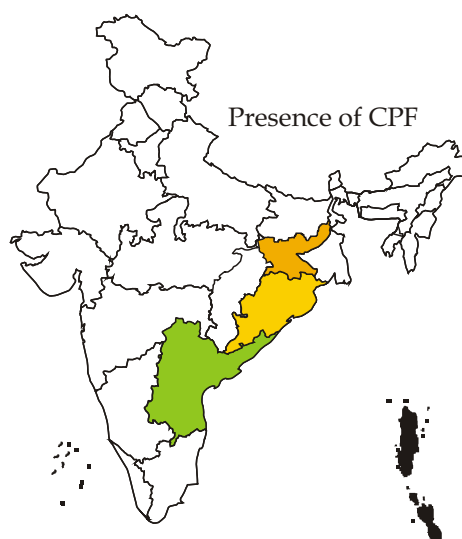
Long term desired Outcomes

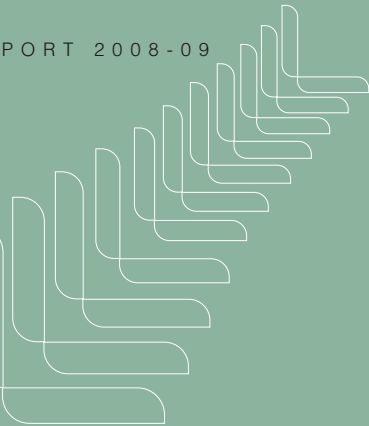
CPF aims to achieve three main outcomes in future:

- Communities (with 30 - 50% representation to women at all levels) demonstrate capacities to manage forest resources in a sustainable way on their own, with due regard to bio-diversity conservation and realise benefits (Non-Timber Forest Produce including bamboo, timber, plantations, value for environmental services and carbon credits) thereon.
- Forest dwelling and forest dependent communities (especially those belonging to the marginalised sections) attain livelihood security through value addition to forest produce, effective land use through linkages with other development interventions and other economic activities (e.g.: embroidery)
- Frameworks and objectives of Policy statements and implementation guidelines, concerning participatory forestry as well as forest dwelling and dependent communities, at different levels (State, National and International) will have pronouncements that favour poor communities in general and women among them in particular.

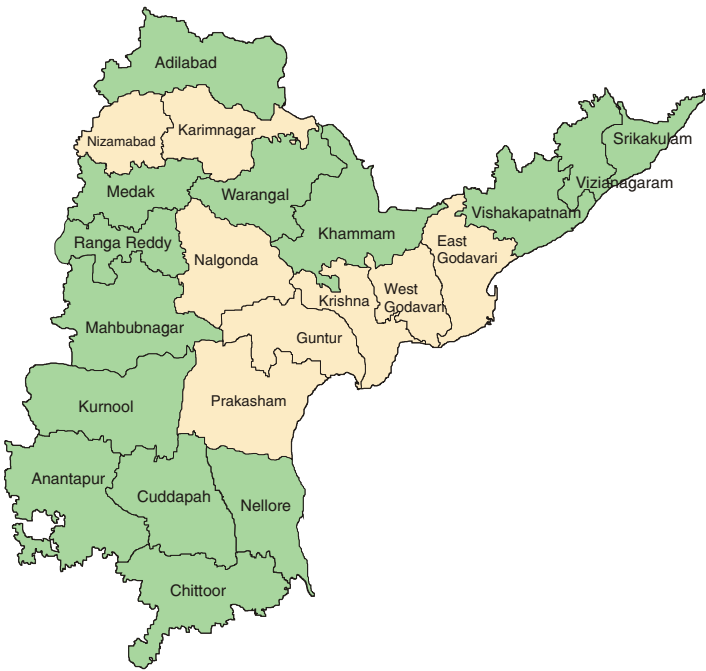
Geographical Focus

CPF has been active in AP since inception. It reached out to Orissa in the year 2007 and plans to initiate work in Jharkhand in a near future.





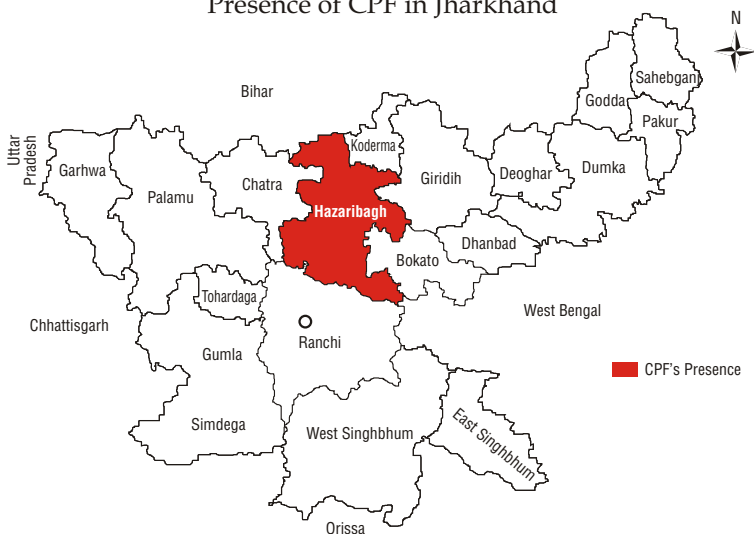
Presence of CPF in Andhra Pradesh



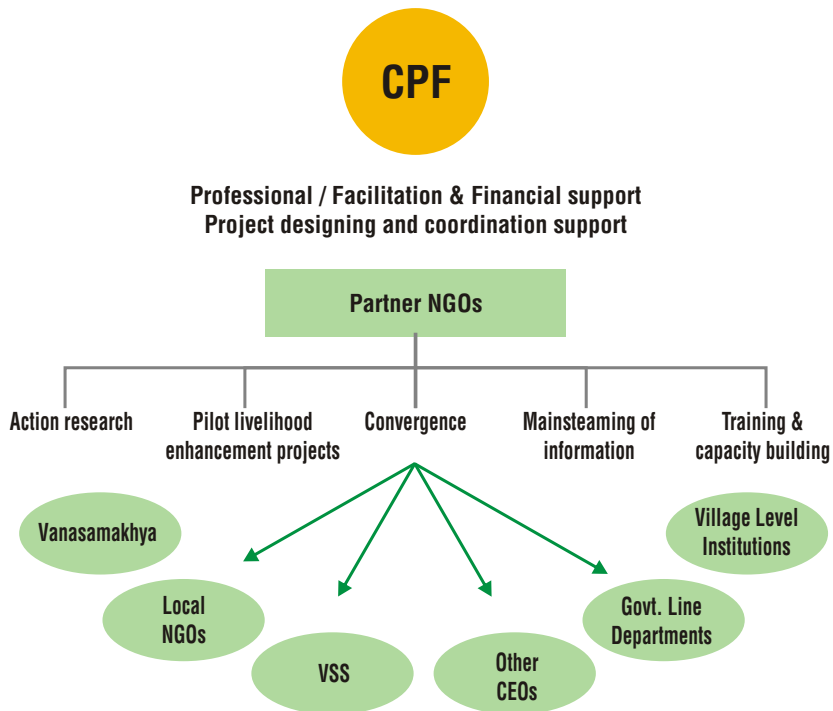
Presence of CPF in Orissa

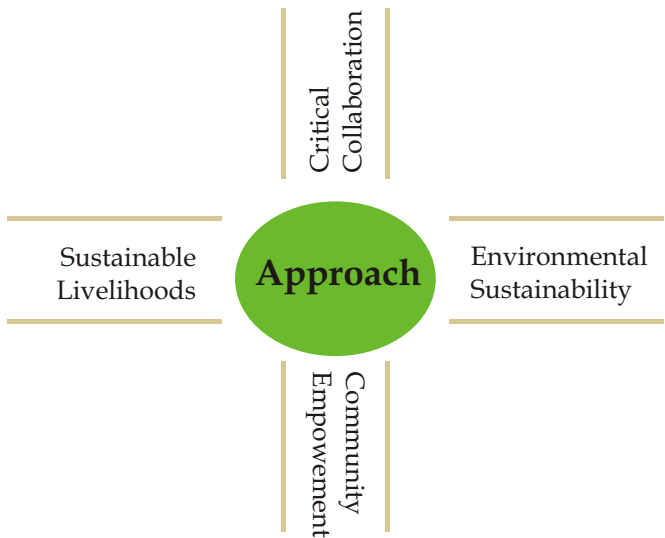
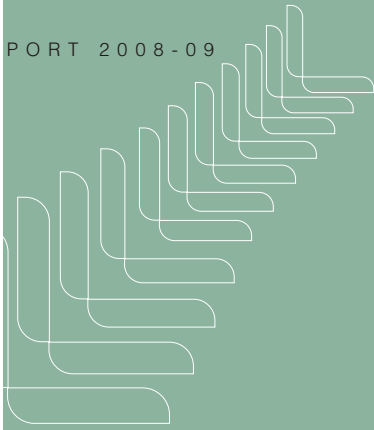


Presence of CPF in Jharkhand

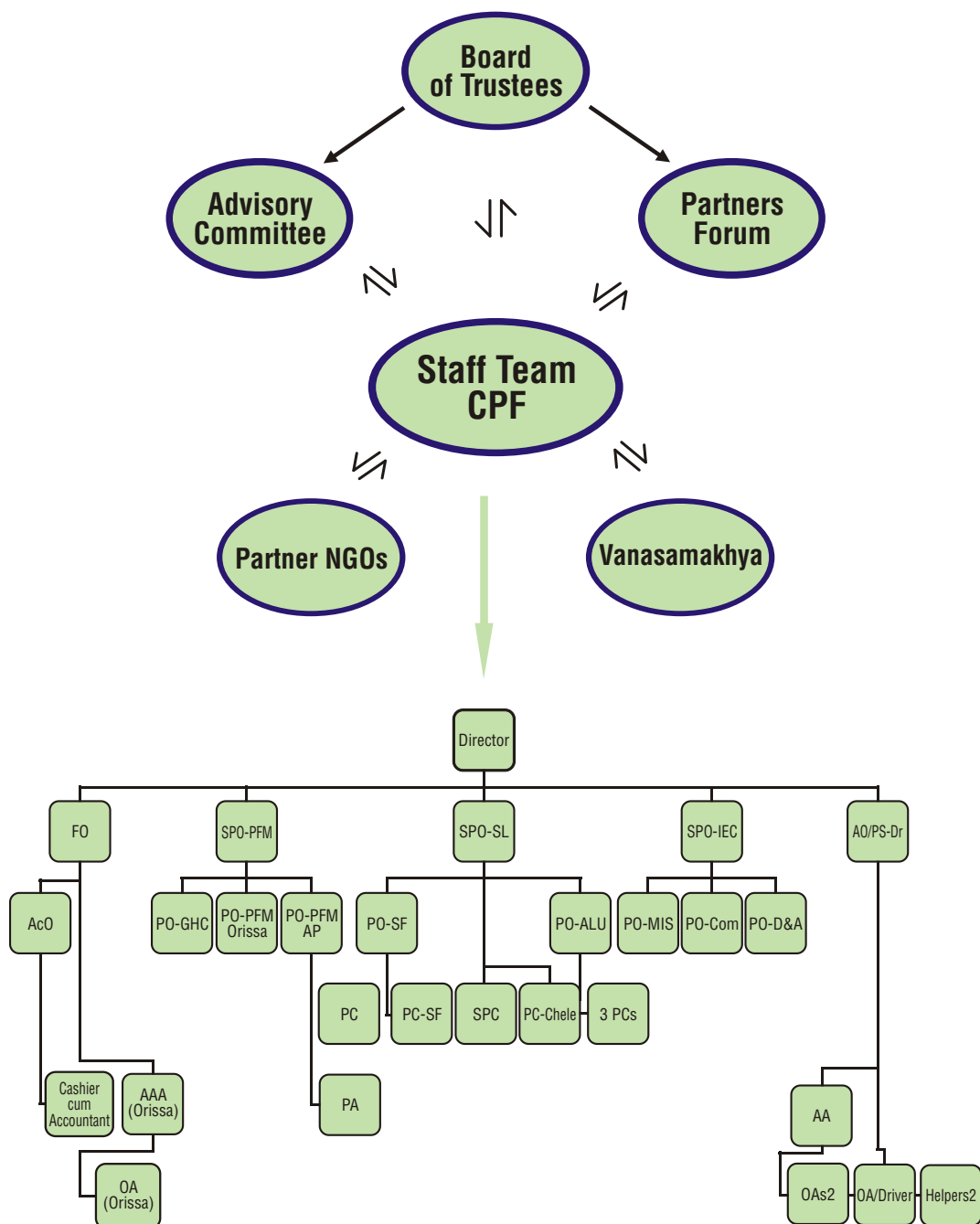


Working Relationship of CPF Partner NGOs and Vanasamakhya





Structure



Structure of CPF

Board of Trustees

The BoT consists of nine members of whom four are women. The Board meets every year to formulate organisational policies and provide direction to the work of the organisation. The term of BoT members is five years. The Director of CPF is the ex-officio Secretary of the BoT.

Management Committee

A Management Committee comprising Director, Finance Officer, Administrative Officer, and three Senior Programme Officers meet on the first Wednesday of every month. All decisions related to implementation of the ongoing projects, finance, staff and partners are taken by the committee. The Committee is also responsible to exercise the functions of HR concerning staff of CPF. The Committee encourages participation of any team member in the meeting with prior information.

Staff team

The CPF team headed by the Director is responsible for the day-to-day functioning of the organization. It is central to the organisational structure of CPF. All matters concerning the team are discussed in the staff meetings.



Partner NGOs

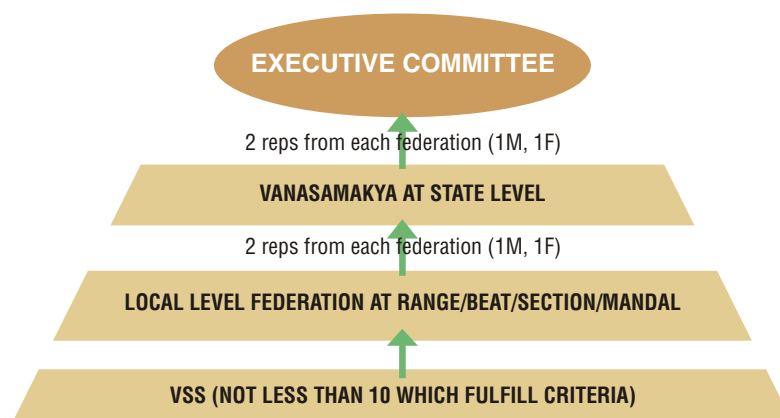
CPF works in partnership with grassroots NGOs either directly or through CBOs depending on the nature and location of the project. Until last year, CPF worked through Regional Resource Centres (RRC) in AP, which has been given up following evaluation findings. However, the NGOs who hosted the RRCs continue to work with CPF as partner NGOs. CPF strives to build capacity of grassroots NGOs during the course of executing projects by playing a supportive role that doesn't attempt to occupy their space.



Vanasamakhya

Vanasamakhya is a network of Vana Samarakshana Samithis (VSSs). It functions at two levels: local and State. The local level federations, which are known as 'local Vanasamakhyas', are affiliated to the State Vanasamakhya, a registered body. These VSSs are in-charge of around 1.25 lakh ha of forestland. Promoted and nurtured by CPF, Vanasamakhya is expected to take care of the future lobbying and advocacy needs of VSSs, besides striving towards sustainable livelihoods for the members of VSSs. CPF strives to provide the required support to strengthen the institution as well as enhance its membership base.

Structure of Vanasamakhya



Sl. No	Name of the District	Ranges Covered	Name of the Networks	NGO's Name	No. of VSS
1	Srikakulam	Heeramandal	Injadri Vanasamakhya	Samyogitha	14
2	Srikakulam	Palakonda	Jamperkota Vanasamakhya	Janachetana	10
3	Vizag	Chodavaram	Modamamba Vanasamakhya	Gramabhyudaya	15
4	Vizag	Paderu	Viswa Vanasamakhya	Smile	13
5	Nellore	Udayagiri	Udayadri Vanasamakhya	Fuds	25
6	Nellore	Kavali	Kalugolamma Vanasamakhya	Needs	24
7	Nellore	Venkatagiri	Velugonda Narisimha swami Vanasamakhya	Rredo	25
8	Nellore	Atmakur	Mallemkonda Vanasamakhya	Pvs	24
9	Kurnool	Velugodu	Nallamala Tiger Vanasamakhya	Star Yooth Association	12
10	Kurnool	Rudravaram	Nallamala Vanasamakhya	Chrd R	13
11	Kurnool	Kurnool	Kalvabugga Vanasamakhya	Chrd K	17
12	Ananthapur	Bukkapatnam	Vanajyothi Vanasamakhya	Reds	10
13	Ananthapur	Kadiri	Vanalakshmi Vanasamakhya		10
14	Chittoor	Puttur	Padmavathi Vanasamakhya	Irds	21
15	Medak	Narsapur	Manjeera Vanasamakhya	Seed	10
16	Medak	Narsapur	Veerahanuman Vanasamakhya	Seva Sangam	14
17	Medak	Ramayanpet	Sai baba Vanasamakhya	Dream	12
18	Medak	Narsapur	Veerabhadra Vanasamakhya	Scope	10
19	Warangal	Pasra	Sammakka Sarakka Vanasamakhya	Maari	12
20	Warangal	Pasra	Adarsa Vanasamakhya		12
21	Khammam	VR Puram	V.R. Puram Vanasamakhya	Asds	10
22	Khammam	Dummugudem	Parnasala Vanasamakhya	Hnrda (haritha)	15

Finance Committee

A Finance Committee has been constituted by the BoT to advise on matters concerning finance of the Trust. The BoT also constitutes other committees as per the need.

Advisory Committee

The Advisory Committees are constituted theme wise or project wise from time to time. If in case, the resource agency has mandate for constitution of planning/steering committee, CPF treats such committee as advisory committee for that specific project. Programme staff interact with the members of this committee in the mode of formal meeting if needed or one-to-one interaction, emails and contact over phone whenever the committee/s inputs are required during the process of implementation of the programme. There is no specific periodicity/date for these meetings.

Partners Forum

The CPF team along with the BoT convenes an Annual Partners Meeting every year. The event facilitates coming together of partner NGOs, CBOs, government officials, academicians, researchers, resource agencies, organisations in similar field, members of the advisory committees of CPF and other individuals concerned with forestry work. The annual accounts and activity reports of the organisation for the previous year are presented and future plans are discussed. Both the long-term strategies and the short-term action plans are developed, based on the consensus of the meeting. Besides, projects/studies are also designed and mobilisation of resources is sought, based on needs articulated by the partners.



Programmes



Programmes

CPF, since inception, has been working in the areas of networking and advocacy, capacity building, communication & documentation, research & analysis and livelihood enhancement. During the Phase of 2003-06, CPF focused on strengthening the Community Forest Management (CFM) programme through partner NGOs, three RRCs and Vanasamakhya. In the next phase (2006-2009), the focus was on grooming Vanasamakhya to function independently (not the financial aspects), mobilising finances from other sources for taking up livelihood enhancement projects through the RRCs, make efforts to initiate work in the State of Orissa to start with (and Jharkhand eventually), expanding the team size of CPF to cater to the needs of the above initiatives and streamlining the systems within the organisation to function effectively.

To determine the degree to which these activities of CPF have been realised, comprehensive evaluations of CPF's core programmes have been undertaken by external evaluators. A total of four external evaluations were conducted for CPF i.e. first evaluation for the period of activities 1996 - 2000, the second evaluation for the period of activities during 2000 - 2003 and the third evaluation for the period of 2003 - 2005. The fourth and the latest evaluation took place in July 2008 by an external team of two members for CPF programmes from April 2003 to March 2008. The primary objective of this evaluation was to look into the core and other programmes of CPF to understand the overall picture and assess the impact of CPF interventions over the past five years. The evaluation was aimed at identifying the constraints that hampered the pursuing of any objectives and/or recommendations and offering constructive suggestions on the approach to selection and implementation of these activities. Six key focus areas were addressed by the evaluators. Recommendations were made at the end of the evaluation exercise and efforts towards incorporating and adopting those recommendations are underway.

To build a bridge from the present to the future, for taking into account imminent changes in the internal/external environments of CPF, for taking stock based on the comprehensive evaluation findings, to understand CPF's efficiency and effectiveness in executing its programmes and justifying expansion plans, a Strategic Planning exercise was undertaken. During the strategic planning exercise, the vision, mission, shared values, strategies and core areas were collectively defined by the team. Few OD exercises relevant to the context of strategic planning were also taken up like 7s and revision of job chart. Three core programme areas and a cross-cutting area were identified. They are:

1. Participatory Forest Management: deals with institutional strengthening, liasoning and action research.
2. Sustainable Livelihoods: focuses on alternative livelihoods for forest dependent communities, forest-based livelihoods, sustainable forestry, NTFP value addition, enterprise development and market linkages and action research.
3. Policy Advocacy: deals with implementation, policy research and changes and advocacy.
4. Cross-cutting Programme:



- a. Gender and HIV & AIDS Concerns: deals with mitigating concerns of Gender and HIV & AIDS in all programmes of CPF.
5. Over-arching Programme:
 - a. Information Exchange and Communication: links the programmes of CPF in terms of providing support to projects information and strategic decisions. It also acts as an interface between CPF and the outside world with respect to interchange of information and communication.

The activities undertaken by each team are funded through several donors for different projects. The list of donors is given towards the end of this report. The core support is rendered by Oxfam Novib and the Ford Foundation. Independent reports are sent to the donors annually in the format prescribed by them. However, the report in hand is a consolidated report of all the activities for the reporting year. These activities fulfill the programme objectives and are classified under the interventions and sub programme areas.

2. Participatory Forest Management

The Participatory Forest Management (PFM) team works to empower and ensure sustainability of Vanasamakhyas, VSSs and their networks. Along with the other programme teams it also works on promoting community forest management. It facilitates capacity building of VSSs and partner NGOs in skills like micro-plan preparation and gender sensitisation and mainstreaming. The staff of the partner organisations are also trained in conflict resolution and community empowerment processes for use in meetings and work with line departments and stakeholders. CPF has lately been involved in giving inputs for the process and implementation of Forest Rights Act (FRA) 2006.

The PFM team, led by a Senior Programme Officer, consists of three Programme Officers, a Project Coordinator and a Programme Associate. The interventions of the PFM team can be divided into three sub-programme areas.

a. Vanasamakhyas and VSSs

CPF, in the past few years, has been working towards making Vanasamakhyas an independent network federation. Various activities were undertaken to make Vanasamakhyas institutionally sustainable and independent. In fact, Vanasamakhyas has advanced significantly and could be gradually de-linked from CPF in the years to come.

The state Vanasamakhyas has 22 active local networks and a total of 329 VSSs members. These local networks are actively working on strengthening information dissemination to the VSSs on various forestry issues and Government schemes, among others. The State Vanasamakhyas office has been functioning independently. Programme Executives and members of the executive body share the responsibility of its functioning. In fact, it has been successful in promoting two local networks in non-CPF operational areas.

Vanasamakhyas passed 14 resolutions towards strengthening VSS and has been actively campaigning on its implementation. These resolutions have been submitted to the Chief Minister (CM) of AP and other concerned authorities. These efforts have partly contributed to the allocation of Rs.360 crores for the VSSs in the Annual budget of the State for the year 2009. Vanasamakhyas undertook and successfully completed the social audit consultancy in eight forest Divisions

Objectives of PFM

- Promoting participatory forest management and conservation among VSSs and networks with special focus on livelihood security and climate change.
- Strengthening forest dependents and dwelling communities as well as NRM-based CBOs of women, SC, ST and marginalised for holistic empowerment with sensitivity to Gender and HIV & AIDS concerns.

supported by the FD. The report was subsequently submitted to the FD. They also pursued with the Department relentlessly, to receive the payment in this regard. So far an amount of Rs 15,92,213/- could be realised. Efforts to release the pending amount of Rs.1,18,600/- are on. Vanasamakhyas also successfully negotiated the release and distribution of dues collected via Departmental Extraction of Timber (DET) among eligible VSS members in 32 VSSs of Nellore. Around 1977 women, 2072 men and a total of 3951 VSS families have benefited from this. The Programme Executives also participated and gave inputs in the Participatory Performance Appraisal study conducted in 100 VSSs of Orissa.

A comparative study of the performance of VSSs under the Andhra Pradesh Community Forest Management (APCFM) and Forest Development Agency (FDA) programme in AP was undertaken. A total of 100 VSSs were selected - 50 under APCFM and as many under FDA. The study was designed to understand the level of performance of the VSSs and identify weak areas so that it can be pursued with the concerned authorities for necessary action.

CPF has been working on encouraging local Vanasamakhyas to pursue with concerned authorities/Departments for obtaining titles for individual and community rights under FRA 2006 and promote sustainable practices thereafter. CPF has facilitated the application and submission of about 17,108 individual claims from 187 VSSs and 801 collective claims from 89 VSS under the FRA. Two state level workshops on FRA were organised by CPF. Both were well attended by the community, NGOs and Government officials. The first workshop was held on 16th June 2008 on "Sharing of Experiences of NGOs on the Status and Process of Implementation of Forest Rights Act 2006". The second consultation was organised on 7th March 2009 on the "Status and Process of Implementation of Forest Rights Act 2006 in Andhra Pradesh".

Bamboo is extensively available in nearly 1000 VSSs in AP. VSS members are entitled to a share of 50% of the net returns from the harvest of bamboo in the VSS forests. However, bamboo has been harvested only in a few VSSs across the State. Even in the places where it has been harvested, the benefits are yet to reach the individual members. Thus CPF has been working on spearheading action towards realisation of benefits for individual VSS members from harvest of bamboo in the VSS forests. Awareness creation, capacity building and network building activities have been undertaken. Sustainable bamboo harvest plans have been prepared in 28 VSSs. These have been submitted to the FD for harvest permission. VSS representatives are lobbying with FD and other Departments for these activities. Till date, enumeration of bamboo clumps has been completed in 26 VSS and six bamboo clusters have been formed in three ranges of Srikakulam and Vishakapatnam forest Divisions.

There are several insurance schemes available which cover health, accident and life for a reasonably low premium. However, it has been found that most of the VSS members have not been availing these schemes due to lack of awareness and access. CPF facilitated interaction between the State Vanasamakhyas and Oriental Insurance Corporation Pvt. Ltd. (OICPL) and it has been agreed that

CPF has facilitated the application and submission of about 17,108 individual claims from 187 VSSs and 801 collective claims from 89 VSS under the FRA in AP and 3780 individual claims and 20 collective rights claims in three Divisions in Orissa.



the State Vanasamakhya can be given agency for “Micro Insurance” so that they can enlist members in groups.

b. Orissa Forestry Programme

In Orissa, CPF is working in three forest Divisions in the Districts of Kandhamal, Keonjhar and Navarangpur. CPF has been working to strengthen the networking and institution building activities initiated during the earlier year. Through action research it has tried to gain an understanding of specific issues like JFM/CFM situation and Non-Timbre Forest Produce (NTFP) distribution and marketing in CPF project areas. It has also tried to build awareness and capacities of partner NGOs and communities on Biodiversity Act and FRA 2006.

CPF facilitated the application and submission of a total of 3780 individual claims and 20 collective rights claims in its three operational areas. To create awareness among the community members on FRA 2006, booklets on FRA in Oriya were disseminated in its operational areas.

To enhance the presence of the community in forest management, CPF, through its partner NGOs, has mobilised the VSSs to be involved in micro-plan preparation. Trainings on micro-plans have been imparted to VSS members and a total of 21 micro-plans have been completed. The convergence of National Rural Employment Guarantee Act (NREGA) with forestry, fodder and fuelwood-based agro forestry would ensure livelihood to VSS members. Efforts on this front are underway. In fact, CPF has facilitated the issuing of a total of 5963 NREGA job cards in 100 villages. A study on the implementation and impact of NREGS in Orissa has been completed.

CPF organised a three-day workshop in Bhubaneswar on 25th, 26th and 27th June 2008 that looked at the implementation of FRA 2006 on the first day, Institution Building and Networking on the second and Mainstreaming HIV & AIDS

concerns on the final day. This workshop was well attended by the community, NGOs and Government officials.



c. Jharkhand Forestry Programme

CPF aims to study the issue of forest management and forest-based livelihoods extensively before embarking on any major projects in Jharkhand; hence the successful initiation of work in Jharkhand has been one of the most important achievements of the past year for CPF. A draft report on the “Status of J/CFM in Jharkhand” and a study on the NTFP-related livelihood dependency and people's perception of the commercialisation potential of selected NTFPs in selected locations of Gumla, Hazaribagh and Simdega Districts of Jharkhand have been prepared. CPF also established and maintains relationship with partner NGOs, CBOs, FD of Jharkhand and other institutes like the Indian Institute of Natural Gums and Resins (INRG), Ranchi.

3. Sustainable Livelihoods

The team of Sustainable Livelihoods (SL) seeks to empower the forest dwelling and dependent communities to secure their livelihoods through effective management of resources. The SL team, led by a Senior Programme Officer, has got two Programme Officers, a Senior Project Coordinator and five Project Coordinators.

CPF undertakes three kinds of interventions under this programme:

a. Forest Produce-based Initiatives:

Forest Produce-based Initiatives (FPI) works towards grounding income generating opportunities from forest produce for forest dependent communities by strengthening the production and marketing support systems in a sustainable manner. With the help of partner organisations, it facilitates sustainable harvest, regeneration and value addition of forest produce as well as enterprise development and linkages with NTFP markets.

The FD is taking an active interest in the Adda leaf project and has provided for a consultant to take care of market linkages and promotion of the activities. As a result, new links with traders have been established in the Visakhapatnam circle and the plate makers have entered into agreements with traders for supply of leaf plates. The FD has been promoting Adda leaf plate making as a livelihood activity in areas where it was not practised before. Since the FD has taken up the Adda leaf initiative in the Vishakapatnam circle, the time of Project Coordinator is used in other locations including Orissa for adda leaf as well as other value addition initiatives. An impact study of the Adda leaf project in 20 villages was undertaken. Process documentation of the project was prepared in two formats: publication ("Turning a New Leaf") and video. ("Same Leaves, New Grip"). To upgrade the skills of the community, a training program was organised on Adda leaf cup making. Five individual entrepreneurs from Vishakapatnam, Warangal, Badrachalam and Nagarjuna Sagar Tiger Reserve (NSTR) are practicing leaf cups making after the trainings were given on leaf cup making using machine.

The presence of four sales facilitators at Badrachalam has helped identify gaps between the NTFP collectors and the GCC at procurement centres.

Chenchu Livelihood Enhancement

CPF has been working with the Chenchu community in Nagarjunasagar Srisaillam Tiger Reserve (NSTR) since 2006 with a collaborative project, "Livelihood enhancement through sustainable and safe practices of rock bee honey harvesting in NSTR." This project intends to enhance and empower livelihood of Chenchu community living in the core and buffer zones of NSTR as well as conservation of biodiversity of the Sanctuary through people's participation and involvement. By now, this has grown into a successful collaborative mega project. Sustained efforts have led to the acceptance of new scientific methods of honey harvesting by the Chenchu community honey harvesters in the operational areas. Trainings on sustainable honey harvesting practices were organised in 12 clusters in the reporting year and was attended by a total of 357 participants. The process to form a Chenchu harvesters' association has been initiated. The Chenchu women of Banala village got trained and are stitching the protective gears used for honey harvesting in the Support Service Centre,

Objective of SL

- To work towards livelihood enhancement of forest dwelling and dependent communities by upgrading their skills and knowledge base with due regard to conservation of biodiversity.

The Chenchu women of Banala village (NSTR) got trained in stitching the protective gears used for honey harvesting and are making the gears at the Service Support Centre, Achampet.

Snapshot of Chenchu Livelihood Enhancement Project

Location: Nagarjunasagar Srisaillam Tiger Reserve

Total Hamlets: 338 Chenchu Pentas (villages) with an average population of 124 members each (ITDA statistics)

Project Coverage: 115 Chenchu Pentas in Core (80) and buffer (35) zones

Key Factors: GO-NGO collaboration, scientific

Achampet. This aims to safeguard the interest of Chenchu honey harvesters as well as create employment options.

In Ananthapur District, support has been provided to REDS, a local NGO to take up value addition of neem seed. Training workshops on value addition to Amla and deseeding of tamarind were organised to enhance the livelihood from forest-based produces.

Another sub component under the FPI is Sustainable Forestry (SF). It aims to incorporate technical aspects of sustainable forest management practices among communities living in the forest interface of CPF operational areas. It also intends to bridge the gap between the existing harvesting practices of the communities and the scientific/sustainable resources utilisation practices as well as enhance awareness of the communities with regard to conservation. SF also aims to create a database of forest resources by collaborating with forest-based research institutions.

Under this sub component, the biodiversity register was revisited in Vishakhapatnam, Badrachalam and NSTR while the micro-plans of Vishakhapatnam division too were re-looked. Workshops on resource monitoring were conducted in Batrlotti, Tummalabailu, Vatavarlappalli and Pullaipalli clusters and attended by 101 participants (68 men and 33 women). The Chenchu community members from four clusters were trained on resource monitoring methods. The community has started documenting the data using these methods. The resource monitoring of honey colonies has been undertaken and Global Positioning System (GPS) readings are being recorded in Achampet Division of NSTR. The community actively participated in documenting the availability of eight NTFP species in their forests

across 16 villages in NSTR.

Quick Facts (cumulative)

Trainings*	1422 (men & women)
Workshops **	278 (men & women)
Members groomed***	71 (men & women)
Clusters working with	20 covering 5 districts

* Trainings on safe and sustainable practices of rock bee honey harvesting, adda leaf cup making, tamarind deseeding, value addition to amla, resource monitoring and stitching gears for honey harvest.

** Workshops on awareness, orientation and implementation of FRA 2006, formation of honey harvesters' society, agro-based forestry and sustainable honey harvest involving master trainers and honey harvesters.

*** Groomed as field organisers, NTFP

b. Appropriate Land Use-based Initiatives:

This domain on Appropriate Land Use-based Initiatives (ALU) currently focuses on land use-based issues like watershed and fodder development. It advocates for judicious use of common property to meet with water and fodder needs and for continuous supply of fodder even in lean seasons. CPF also supports the community to undertake soil and moisture conservation activities on common and forest land to improve the productivity through various development schemes. CPF promotes fodder generation activity to reduce risks of livelihoods of livestock rearers due to fodder scarcity.

As the intervention on watershed in forest fringe is relatively recent, activities will be undertaken only in the coming year.

c. Other Economic Activities:

CPF also promotes other income generating activities for the target communities as these alternate means of livelihood help ease off pressure from the



forest. It has undertaken a couple such projects for Lambada tribe in AP (embroidery) and wood-based artisans in Medak forest Division.

The project with Lambada women on embroidery as an alternative source of income to collection of fuelwood has flourished. Artisans at Medak and Achampet Divisions have agreed to increase contribution towards corpus fund from their wages by 10-15% to help strengthen the cluster. The technical coordinators were trained on printing and designing by the CPF Project Coordinator. Trainings were given to artisans on skill upgradation. In fact, in Achampet cluster I, there has been a 50% hike in the cluster income and a 28% hike in the Medak cluster income over the past six months. A training workshop on 'Enterprise development through cluster/group enterprise approach to the persons involved in enterprise development in their VSSs' and an exposure visit to ASCENT, Bangaluru were organised for the artisans at the clusters.

4. Policy Advocacy

CPF initiates wider consultations and makes use of its learning and experience gained from execution of various projects for policy advocacy initiatives. CPF follows implementation of the most appropriate policy, legislation and/or institutional framework and provides feedback to policy makers. It initiates process of formulation of relevant policies through stakeholder consultations involving community, civil society and concerned authorities.

To further the cause of community forestry, CPF launched an e-campaign (<http://communityforestry.cpf.in/>) to advocate seven exigencies before the MoEF. The first exigency deals with the involvement of the civil society organisations in Reducing Emissions due to Degradation and Deforestation (REDD) related processes. The second exigency promotes the idea of creating a stream for "Community Forestry" exclusively starting from MoEF to APFD further down the line. The third exigency talks of creating a separate training & research institute for community forestry. The fourth exigency of the campaign is about the need to revisit and restructure the FDA. CPF is proposing a detailed alternate structure to make the functioning of the FDA more efficient and inclusive of the community. The next exigency deals with the issue of the sustainability of community institutions (VSSs/VFCs) in forestry. CPF suggests the assessment of their performance and based on these assessments capacitate the community institutions. The sixth exigency suggests the formation of Foundations for Protected Areas similar to the one existing in the Periyar Tiger Reserve. At present, most of the attention of the ministry is towards environment-related clearances and other issues while the subject of forestry, its requirements and the community are pushed to the backseat. Hence the final exigency advocates the need for more focus on forestry within the MoEF.

CPF's efforts had partly contributed to the formulation of the GO 43 which stated that the net income for beedi leaf collection has to be shared with the beedi leaf collectors. The pressure built by CPF and the advocacy done to realise the old dues have led to the release of funds. At present, 468 collectors in Adilabad Division and 1451 collectors in Badrachalam Division have received their dues. Efforts are made towards release of dues in other Divisions as well.

CPF has also been consistently lobbying with the FD for the release of dues

As regards beedi leaf returns, 468 collectors in Adilabad Division and 1451 in Badrachalam Division have received their dues.

8860 VSS members from 32 VSSs of Nellore received an average of Rs.3903/- out of the Departmental Extraction of Timber.

collected via DET. In 32 VSSs of Nellore, the dues have been released. Each VSS member received an average of Rs.3903/- and a total of 8860 VSS members (4492 women and 4368 men) have benefited.

CPF has been actively involved with the implementation of the FRA 2006. In fact, CPF organised consultations amongst Government officials, lawyers, researchers, NGO functionaries - both before and after the Act (2006) and the Rules (2007) were issued - to discuss and send recommendations to the Ministry of Tribal Affairs on various clauses within the law and the rules. The FRA was notified on January 1, 2008 and the implementation process began



thereafter. CPF has been closely following and documenting this implementation in AP and Orissa. Under the Forest Governance Learning Group (FGLG) initiative, CPF closely tracked and guided the implementation of the FRA in one forest range i.e. VR Puram of Bhadrachalam South division in AP. Here, CPF, along with ASDS (CPF's partner NGO) facilitated the process of submission of claims by the eligible persons for individual titles (2973), and community titles (219). CPF emphasised the need to focus on submission of claims with regard to collective rights on fishing tanks inside and outside the forest, NTFP collection area, bamboo area, fuel wood collection area, grazing area, traditional festival area, etc.

CPF organised a couple of state level meetings (May and June 2008) on "Sharing of Experiences of NGOs on the Status and Process of Implementation of Forest Rights Act 2006" in Andhra Pradesh and Orissa. The deficiencies identified (including the low priority given to the claims for collective rights) during the meeting were taken to the attention of the Convenor of the State level monitoring committee for appropriate corrective measures. In March 2009, another State level consultation was organised on the "Status and Process of Implementation of Forest Rights Act 2006" in Hyderabad. The meeting was attended by the APFD officials, community members, NGOs and academicians. CPF has been making representations of issues in the FRA implementation process to appropriate forums in AP and Orissa. CPF's effort on the implementation of FRA has improved linkages between the FD and other concerned Departments like the Tribal Welfare.

- 78 meetings on sensitisation to HIV & AIDS concerns were organised in AP.
- 720 VSS members were capacitated in mainstreaming concerns of Gender and HIV & AIDS Orissa
- Two PLHA's were given financial support by the community for incidental expenses in Mallemkonda VSS of Nellore Division

5. Cross-cutting Programme

a. Gender and HIV & AIDS Concerns

The programme aims at mitigating concerns of Gender and HIV & AIDS in all developmental programmes of CPF. It achieves this through building capacities of CPF staff, partner NGOs and target communities in mainstreaming concerns of HIV & AIDS. As part of mainstreaming concerns of HIV & AIDS, CPF has adopted a workplace policy and promotes development of one for the NGO and communities it works with. As regards Gender, CPF facilitates empowerment and decision making processes involving all the members of community with equal participation of men and women.

Thirty-two VSSs villages have passed a resolution on HIV & AIDS. These resolutions adopted by the VSSs involve inclusion of People Living with HIV &

AIDS (PLHA) in the family, social and institutional level, prioritising PLHAs in NREGS and VSS works, facilitating linkages between PLHAs and services offered by the Government, NGOs and providing community care. In fact, 18 PLHAs have been identified who will be linked to the services at a later stage. A tool kit on Mainstreaming Concerns of HIV & AIDS has been developed.

As a result of the efforts of CPF in mainstreaming HIV & AIDS concerns in the community, it has been observed that the sensitivity of the community towards PLHAs has increased over time. In fact, in Mallemkonda local Vanasamakhyas of Nellore Division, two PLHA's were given financial support by the community for incidental expenses like availing treatment at Care and Support Centres.

Seventy-eight meetings on sensitisation to HIV & AIDS concerns have been organised with the help of the Programme Facilitators in AP. In Orissa, 720 VSS members were capacitated in mainstreaming concerns of Gender and HIV & AIDS and posters on the same were published. In Jharkhand, the situation of HIV & AIDS concerns in Gumla and Hazaribagh Divisions have been observed.



6. Overarching Programme

a. Information Exchange & Communication

Information Exchange & Communication (IEC) is a new programme area for CPF that intends to link the programmes of CPF viz. PFM and SL and Policy Advocacy in terms of providing support to projects information and strategic decisions. The IEC team intends to contribute to strategic decisions and planning of CPF. The activities of IEC are pooled from all the projects and core programme activities. The team is involved with bringing out publications, films, brochures, project updates, posters and pamphlets, process documentations, training manuals, donor reports, policy briefs, projects baseline analysis, coordinations for action research, proceedings of major consultations/meetings, maintaining database of projects information as well as updating websites.

Since IEC team was created only towards the end of 2008 and the new staff in the programme joined in 2009, the activities undertaken have been a handful.

The CPF website was redesigned and the content was revamped. The IEC team collaborated with the programme team in bringing out brochures for RRCs and Vanasamakhyas. The CPF calendar also was printed. IEC has been involved with the analysis of projects data, preparation and editing of reports based on the action research of the core programme team. Several formats for different project activities were developed. IEC was also involved in the discussions and project formulation on Climate Change and preparation of monitoring and evaluation plan for the Ford Foundation project.

CPF has been actively involved in the implementation of FRA 2006. IEC team collected information on FRA 2006 and coordinated in organising two state level FRA consultations. An event to commemorate the World Environment Day 2009 was organised by the IEC team. The staff of CWS, CSA, Bodhi, WASSAN, NDF and CPF participated in this event.

Objectives of IEC

- Working closely with programmes of CPF to inform strategic decisions and consolidate learning with a view to disseminating them internally and outside as appropriate.
- Disseminating information from research, studies, projects, documentation and experience to appropriate readers/viewers through appropriate media.
- Building documentation system for forestry-based issues to support CPF's role of policy advocacy functions and create a knowledge portal for publication, learning and wider dissemination.
- Utilising Information Communication Technology, especially people-friendly mass media by forest dwelling/dependent communities to improve ecosystem and livelihoods.
- Creating network of NRM-based communication professionals to design communication plan for CPF and engage in common initiatives.



7. Plans for Future

a. Promoting sustainability of Community Forest Management through VSS networks in Andhra Pradesh

Project period: April 2009 - March 2012

Funded by: Oxfam Novib

Approved Budget: Rs.28,779,620/-

Through this project, CPF aims to “facilitate local Vanasamakhyas in select project locations to initiate action in member VSSs for taking up own initiatives for protection, management, use and regeneration of forest resources in their charge.”

The World Bank-supported APCFM project is due to be completed in March 2009. 5000 VSSs were supported by this project. It is feared that once the project period is complete the benefits from the growth of the VSSs under the CFM programme will not sustain. There is also a need to take up advocacy for regular budgetary allocations to VSSs by both the State and Union

governments. In the absence of funding and other benefits it is not fair to expect the VSSs to take up proactive initiatives in protecting the forests. The lack of awareness about low premium insurance schemes on health, accidents and life have led to most VSS members not availing these schemes. Also, the implementation of the FRA 2006 saw opportunities arise for collective claims by communities and individual claims on forest land. Persuasion to recognise these claims and award them is needed. It is also important to direct the communities in the post-recognition period, towards organic farming in case of individual holdings and sustainable management practices in case of community claims.

The project aims to achieve the following objectives:



1. To encourage local Vanasamakhyas to pursue with concerned authorities/Departments for obtaining titles for individual and community rights under FRA and promote sustainable practices thereafter
2. To guide local Vanasamakhyas to see that the benefits from harvest in VSS forest reach the individual members
3. To access NREGS funds for the VSS development activities as per the GO 385
4. To ensure that Forest Department and other concerned line Departments take cognisance of VSS resolutions, micro-plans and other requirements through active involvement of State Vanasamakhya.
5. To facilitate VSS/local Vanasamakhyas to adopt sustainable forest management practices through resource mapping/monitoring studies in their VSS/EDC
6. To mainstream concerns of gender and HIV & AIDS in new project locations
7. To operationalise Micro insurance agency by Vanasamakhya
8. To take up initiatives on Climate Change and pro-poor forestry under REDD

9. To guide Vanasamakhya in leading the advocacy and lobbying for funding, realisation of entitlements and transparency in the interest of VSS and forests
10. To support State Vanasamakhya in taking up in monitoring and the follow up lobbying and advocacy.

The areas of operations and activities to realise these objectives have been planned. Various activities like capacity building, training programs, plan preparations, meetings, consultations, documentation, among others have been planned to fulfill these objectives.

b. Promoting livelihoods security of Forest dependent and dwelling communities through multi stakeholder/sector collaborations in Andhra Pradesh

Project period: April 2009 March 2012

Funded by: The Ford Foundation

Approved Budget: \$2,50,000

The project has got two major components:

1. Interface with watershed projects in forest fringe villages:

It aims to conceptualise, demonstrate and upscale ways of integrating people's forestry issues into main-stream watershed development programs, through combined efforts of the community institutions (VSSs and watershed committees) in the forest fringe villages across the state and possibly in the country (long term). CPF collaborates with WASSAN to achieve objective.

CPF intends to collaborate with WASSAN to identify three watersheds in the forest fringe villages, from out of the project area of WASSAN in Adilabad District. The VSSs in such watersheds will be contacted by the Vanasamakhya and the proposed collaboration will be explained to them. WASSAN, CPF and Vanasamakhya will together facilitate discussions between the watershed committees and the VSSs on the modalities of collaboration among the three institutions. CPF, WSSAN and Vanasamakhya have been looking at the possibility of fund transfer from watershed committee to the VSS for the treatment of the forest area, with approval of the DFO. WASSAN will apprise the RD and NABARD and CPF will do the same with the FD and required follow up work with those agencies will also be pursued. Systematic monitoring and evaluation tools are developed for the entire project with training facilitation from external facilitators.



2. Forest produced-based intervention:

Under this there are two components:

I. *Livelihood enhancement through Bamboo harvest:*

The activity is continuation of the previous phase. The intervention aims to make all the VSSs of AP with bamboo (natural/regenerated) in the forest allotted to them, self-reliant in respect of technical, financial and management aspects of sustainable bamboo management covering harvest, marketing and regeneration and pass on the benefits to the level of individual members. CPF intends to continue its efforts of liasoning with local and State level FD officials to issue harvest and transit permits. It has also planned to encourage and train the Vanasamakhyas representatives and CEG clusters formed for value addition of bamboo and Adda leaf to take these works forward. The project will be initiated in Srikakulam. CPF will implement the project through Samyogitha, CPF's partner in the district.

II. *Adda leaf: Community level resource monitoring and regeneration:*

Following CPF's successful project of Adda leaf plate making from 2004 2007, the activity has been scaled up in the entire tribal belt of Vishakapatnam by the FD. An impact assessment study and evaluation of the works of CPF revealed the need for monitoring the resource base of Adda leaf and take appropriate initiatives. In this line, CPF, through this component of the project, aims to create sustained resource base of Adda leaf for the leaf plate making women to continue the activity in future. This will be done through capacitating the community to take up resource monitoring and regeneration.

CPF will implement the project in three Divisions of Vishakapatnam tribal belt through Gramabudhya, a partner NGO of CPF.

c. UKIERI Collaborative Project on Climate Change

Project period: April 2009 January 2010

Funded by: UK India Education and Research Initiative

Approved Budget: 11,000 GBP

Funded jointly by the governments of India and the UK, the UKIERI project aims to develop sustainable collaborations in research areas through a range of programmes of mutual interest to both countries. This project entitled the "Impact of Climate Change on the Water Cycle and Ecosystem Functioning at the River Basin Scale" is examining water cycling and usage at the river basin scale anticipating a continuing increase in demand and alterations as a result of climate change.

This collaborative project has got four goals:

1. To assess the status of the natural resources available to village-ecosystems in selected mandals in Medak district A.P.
2. To analyses current livelihood determinants in differing stakeholder groups in villages in selected Mandals
3. To explore stakeholder perceptions and actions in response to the impacts of changes in the water cycle on livelihood



determinants

4. To develop and apply functional assessment techniques to explore the role of wetlands and their contributions to livelihoods.

Two locations will be selected for the field work, one in the catchment area and the other in the command area of the Singur dam in the Manjira basin. Four villages per location will be identified for data collection and survey. The selection of villages and required training/orientation for the surveys and data collection will be done by the UKIERI researchers.

The partners in the project are the Indian Institute of Science (IISc), Bengaluru, the Indian Institute of Technology (IIT-D), Delhi and the Institute of Sustainable Water, Integrated Management and Ecosystem Research, University of Liverpool UK.

d. Forest Governance and Learning Group India - Social Justice in Forestry

Project period: May 2009 April 2013

Funded by: IIED Through IIFM

Budget: Activity based

The second Phase (August 2007 to April 2009) of FGLG India project focused on tracking FRA implementation, pursuing the work of Phase-I on NTFP-based micro enterprises, lok vaniki initiative in MP and study of tree grower's cooperatives in Rajasthan. CPF agreed to work on tracking FRA implementation and contribute to the follow up work of phase-I on NTFP. Other active members in FGLG India team, who carried out some works are Mr.Sanjay Upadhyay (CFR study), Mr.Sanjoy Patnaik (FRA tracking in Orissa), Mr.Sushil Saigal (consultation with tree grower's cooperatives in Rajasthan) and Dr.Prodyut Bhattacharya (FRA tracking in MP and lok vaniki initiative).



As part of the current phase a two-day planning meeting was held at Bhopal to discuss about FGLG India work plan. Members of FGLG India team have identified the themes of interest and also have discussed about the operation of the group to be more effective. Some of the group members have agreed to take up the responsibility of nodal person for that specific thematic group. This way of working is different from the previous type, where State wise responsibilities were shared. The table below shows the persons and the theme to which they would act as nodal person.

Name of the person	Theme
Dr.D.Suryakumari	REDD related work
Mr.Sanjay Upadhyay	FRA
Mr.Sanjoy Patnaik	Investments into community institutions
Mr.Sushil Saigal & Mr.RC Sharma	Trade of forest products (imports)
Mr.Ajit Banerji	CFM-Orissa
Dr.Prodyut Bhattacharya	NTFP and medicinal plants
Dr.D.Suryakumari	REDD related work

Other than the available budget from the project, concerned thematic nodal persons may also leverage fund from outside to carry out the work they intend to do under these specific theme.

e. Promoting Cross Learning in Community Forestry in India (KIC)

CPF had received a separate grant of Euro 30,000 for promoting cross learning in community forestry in India during the last phase. The objectives of the project include:

- a. Preparation of tool kit on understanding Policy/Practice dynamics in Community Forestry
- b. Introducing the tool kit to NGOs and FD officials of other States

Although all the activities proposed in the project have been carried out and the anticipated outputs produced, there was a balance of Euro 13,508/- at the end of the project. After consulting with Oxfam Novib, CPF has planned to use the remaining grant for the second objective. In this regard, CPF intends to organise conduct workshops involving partner NGOs and FD officials in the project areas of CPF in the States of Orissa and Jharkhand.

9. Events

a. Organised

Title:	Workshop on Strategic Planning, (Phase - I)
Date:	11th & 12th September, 2008
Venue	O.U. - CIP
Title	Workshop on Strategic Planning, (Phase - II)
Date	3rd & 4th October, 2008
Venue	O.U. - CIP
Title	Interaction on - "Livestock based livelihoods and Natural Resources"
Date	14th October, 2008
Venue	Andhra Pradesh Forest Academy, Dullapally - Hyderabad
Title	Discussion on CPF Strategic Plan: 2009-2015
Date	22nd October, 2008
Venue	CWS Conference Hall
Title	Consultation on "The Status and Process of Implementation of Forest Rights Act 2006 in Andhra Pradesh"
Date	7th March, 2009
Venue	St. Ann's Generalate Retreat Centre, Tarnaka - Secunderabad
Title	World Environmental Day
Date	5th June, 2009
Venue	Centre for People's Forestry
Title	Planning Workshop on Climate Change UKIERI Project
Date	8th & 9th June, 2009
Venue	St. Ann's Generalate Retreat Centre, Tarnaka - Secunderabad
Title	Workshop on Monitoring & Evaluation (Phase - I)
Date	18th & 19th June, 2009
Venue	St. Ann's Generalate Retreat Centre, Tarnaka Secunderabad
Title	Workshop on Monitoring & Evaluation (Phase - II)
Date	22nd & 23rd June, 2009
Venue`	O.U. CIP, Hyderabad



b. Attended

Sl. No.	Date / Month	Subject	Venue / Organisers	Attended by	Participant / Resource person Presentation title if any
1	28th Mar - 1st Apr, 2008	Interaction with staff members of Appropriate Technology India regarding various livelihood interventions	Appropriate Technologies India / Uttarakhand	Mr. Ashis Kumar Gharai & Mr. E Poorna Chander	Participant
2	12th & 13th Apr 2008	SAARC - Enlaw Capacity enhancement - Trg/conference	NALSAR / Hyderabad	Dr. D. Suryakumari	Participant
3	7th May, 2008	Advisory Management Committee Meeting - RC NAEB	Univ. Agricultural Sciences / RC-NAEB (Regional Centre), Bangalore	Dr. D. Suryakumari	Member
4	27th & 28th May, 2008	Oxfam Novib Partners Meeting	Aksime Hotel Delhi / Oxfam Novib	Dr. D. Suryakumari	Participant
5	6th June, 2008	Lunching Workshop Project up-scaling SRI in Orissa	IMAGE, OUAT, Bhubaneswar, Centre for World Solidarity Orissa Resource Centre	Mr. Siba Prasad Sahu	Participant
6	14th June, 2008	Divisional Level meeting on Forest Rights Act-06 implementation	SAHARA, Kalyanmandap, Omerkote, Nabarangpur Division, Orissa	Mr. E. Poorna Chander as resource person	Resource person
7	19th June, 2008	Divisional Level meeting on Forest Rights Act-06 implementation	Anvesha Conference Hall, Keonjhar Division, Orissa	Mr. E. Poorna Chander	Resource person
8	22nd June 08	Divisional Level meeting on Forest Rights Act-06 implementation	Journalist Bhavan, Tikabali, Phulbani Division, Orissa	Mr. E. Poorna Chander	Resource person
9	14th -18th July, 4th - 8th Aug and 25th - 29th Aug, 2008	Certificate Program on Resource Mobilisation and Communication	13/17, Panjagutta, Hyderabad / Icfai Business School, Hyderabad The Resource Alliance	Mr. C. Vasu	a. About CPF, b. SDTT- CHELE project
10	2nd to 4th Sept 2008	Accounts Training conducted by Account Aid on behalf of Ford Foundation	The Sound Park Hotel, Trivendrum organized by Account Aid	Mr. P. Satyanarayana (CPF)	Participant
11	2nd- 5th Sept, 2008	Training on Enterprise Development through Cluster/ Group Enterprise Approach to the persons involved in enterprise development in the VSSs"	Ashirvad St. Matrix raod Bangalore ASCENT	Mr. V. Balraj Gupta	Participant
12	3rd - 6th Sept, 2008	1. Protected Area Governance, 2. FGLG India meeting	Scope Complex, New Delhi / IIFM, Bhopal & FGLG India	Dr. D. Suryakumari	Participant & Member of FGLG India
13	24th Sept, 2008	Balancing livestock based livelihood & environment workshop	DFO office Achampet / CONARE - RRC	Dr. D. Suryakumari	Resource Person Chairing the session and moderating the discussions
14	29th - 30th Sept, 2008	"Beyond JFM - Rethinking the forest question in India".	TERI Retreat, Gurgaon, Delhi / WINROCK & ISEC	Dr. D. Suryakumari	Resource Person Comments on Paper - "Governing local forests: JFM and Beyond".



Sl. No.	Date / Month	Subject	Venue / Organisers	Attended by	Participant / Resource person Presentation title if any
15	6th to 11th Oct, 2008	Course on Information Technology for Data Processing and Analysis	National Institute of Rural Development, Hyderabad / NIRD,	Mr. Siba Prasad Sahu & Mr. E. Poorna Chander	Mr. Sahu presented - Child Deficits in Budget: Deprivation of Fundamental Rights
16	14th Nov, 2008	Seminar on Early Childhood Care and Education: Legal Status in India	Dept. of Psychology, Utkal University, Bhubaneswar; CLAP, Cuttak	Mr. Siba Prasad Sahu	Participant
17	14 th - 18th Nov, 2008	Criteria and Indicators of SFM	IIFM Campus / IIFM Bhopal	Mr.Ashis Kumar Gharai & Mr. E Poorna Chander	Participant
18	18th - 21st Nov, 2008	Training on Database Management	Circle Maremma Temple, Bangalore / Centre for Sustainable Technology	Mr. E. Poorna Chander	Participant
19	24th - 27th Nov, 2008	Forestry for Common People	ICFRE & FRI, Dehradun / FRI - Dehradun	Dr. D. Suryakumari	Resource Person / "Retrospect & Prospects of JFM"
20	26th & 27th Nov, 2008	AP Vernacular Workshop	Samstha Gram, Suddapally, Nizamabad / SAN SIP	Ms. T.Vasantha Kumari & Mr. P. Satyanarayana	Participants
21	30th Nov - 7th Dec, 2008	"FGLG Learning Event"	Ku Chawe Inn, Zomba, Malawi / IIED, UK	Dr. D. Suryakumari	Participant
22	21st to 23rd Dec 2008	State Level PLHA Meet	St. Retreat Centre-Gopalpur, Berhampur / INP+	Mr. Akil Khan	Participant
23	2nd Feb, 2009	FGLG India Meeting	Vana Vigyan Kendra Delhi / Prodyut Bhattacharya, Convenor FGLG India	Dr. D. Suryakumari	Participation in interaction as a member
24	12th Feb, 2009	Workshop on Productivity Marketing of Bamboo and its Products	XIMB, Bhubaneswar	Mr. Akil Khan	Participant
25	18th - 20th Feb, 2009	FRA Implementation - Consultation	Hotel Presidency, Bhubaneswar / RCDC & FGLG India	Dr. D. Suryakumari	Resource Person / "Implementation of FRA in Andhra Pradesh"
26	19th Feb, 2009	Consultation on Issues and Concerns in Implementation of Forest Rights Act in Orissa	Hotel Presidency, Bhubaneswar; RCDC, Bhubaneswar and FGLG India	Mr. Siba Prasad Sahu	Participant
27	27th & 28th Feb, 2009	Regional Workshop on Addressing Gender Concerns in Eastern States	CYSD, Bhubaneswar; Solution Exchange for Gender Community, UNDP	Mr. Siba Prasad Sahu	Participant
28	3 th - 5 th Mar, 2009	Community Radio: A tool to empower the community	Development Alternatives, Orcha, Madhya Pradesh	Mr. P. Bruslin Mento, SPO - IEC	Participant
29	12th & 13th Mar, 2009	Regional Annual Consultative Meeting (RACM) of CWS - ORC	CYSD, Bhubaneswar, Centre for World Solidarity - Orissa Resource Centre	Mr. Siba Prasad Sahu	Participant
30	27th Mar, 2009	Community level interaction to discuss opportunity for various interventions	Churchu block, Hazaribagh / Jan Seva Parishad	Mr.Ashis Kumar Gharai	Participant

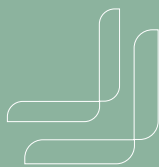


Sl. No.	Date / Month	Subject	Venue / Organisers	Attended by	Participant / Resource person Presentation title if any
31	8th - 10th April, 2009	AMC Meeting of RC (South), NAEB	Periyar Tiger Reserve, Tekkadi, Kerala / RC NAEB - UAS, Bangalore	Dr. D. Suryakumari	AMC Member
32	27th - 29th April, 2009	FGLG India - FRA Consultation Meeting	IIFM - Bhopal / ICCF IIFM & FGLG India	Dr. D. Suryakumari	Resource Person "Status of FRA Implementation in A.P."
33	2nd - 5th June, 2009	FGLG India - Planning Workshop	IIFM - Bhopal / FGLG India	Dr. D. Suryakumari	Resource Person
34	29th - 30th June, 2009	Environmental Services from NREGS: Estimation & Rewarding	Hotel Lalit Ashok, Bangalore / IISc-Bangalore	Dr. D. Suryakumari	Participant



10. Visitors this year

Sl. No.	Name of the Person	Organization and Address
1	Mr. Nilender Mukherjee	Chetrika (NGO) Kharkhana, Vikrampuri, Secunderabad, AP
2	Mr. M. Muthyalu	C/o. Mr. Rajuswamy Building NIRD Road, Rajendranagar, Hyderabad, AP
3	Mr. Jonathan Tollervey	University of Liverpool, London, England
4	Prof. Martin Mortimer	University of Liverpool, London, England
5	Prof. Edward Maltby	University of Liverpool, London, England
6	Dr. Conor Linstead	University of Liverpool, London, England
7	Mr. J. Venkateshwarlu	Consultant & Former Director CAZRI, Jodhpur-Rajasthan
8	Mr. S. R. Hiremath	Samaj Parivartana Samudaya (SPS) Dharwad, Karnataka
9	Mr. Gopal Jha	Manager Project Partner's in Charge Bangalore, Karnataka
10	Ms. Sujatha Ganesh	Sr. Programme Support Officer Partner's in Charge Bangalore, Karnataka
11	Mr. Nilender Mukherjee	Project Manager AKSHARA Network for Development Support Services, Hyderabad, AP



11. Finance

AUDITOR'S REPORT

To
THE TRUSTEES,
CENTRE FOR PEOPLE'S FORESTRY- CPF
SECUNDERABAD-500 017.

We have audited the attached Balance Sheet of Centre for People's Forestry, H.No. 12-13-483/39, 1st Floor, Lane 6, Street No.14, Nagarjuna Nagar, Colony, Tarnaka, Secunderabad -17 as on 31st March 2009 and annexed Income and Expenditure Account and Receipts & Payments Account for the period 01.04.2008 to 31.03.2009. These financial statements are the responsibility of the Trust. Our responsibility is to express an opinion on these financial statements based on our audit.

We have conducted our audit in accordance with the auditing standards of generally accepted in India. Those standards require that we plan and perform to obtain reasonable assurance about whether the financial statements are free of material misstatement. An audit includes examining, on test basis, evidence supporting the amounts and disclosures in financial statements. An audit also includes assessing the accounting principles used and significant estimates made by the management as well as evaluating overall financial statement presentation. We believe our audit provides reasonable basis for our opinion.

We have obtained all the information and explanations, which to the best of our knowledge and belief were necessary for the purpose of our audit.

In our opinion, proper books of accounts have been kept by the Trust so far as it appears from our examination of those books.

The Balance Sheet and the Income & Expenditure Account dealt with by this report are in agreement with the Books of Account.

In our opinion and to the best of information and according to the explanations given to us, the accounts read with the schedule and notes thereon give a true and fair view:

- a. In the case of Receipts & Payments Account, of the cash Flows for the period ended on that date.
- b. In the case of Income & Expenditure Account of the excess of expenditure over income for the year ended on that date.

For SAMPATH & RAMESH

Chartered Accountants,

Sd/-

(A.KRISHNA REDDY)

Partner

Place: Hyderabad.

Date: 10-07-2009

CENTRE FOR PEOPLE'S FORESTRY

12-13-483/39, Lane 6, Street No.14, Nagarjuna Nagar Colony, Tarnaka, Secunderabad-17

SIGNIFICANT ACCOUNTING POLICIES FORMING PART OF OUR AUDIT REPORT OF EVEN DATE

- a. The financial statements have been prepared in accordance with historical cost concept and generally accepted accounting standards.
- b. Fixed assets are reflected at cost less depreciation.
- c. The depreciation on fixed assets is charged at the rates prescribed under the Income-Tax Act.
- d. Income received/receivable and expenditure incurred or estimated with reasonable certainty are recognized as income and expenditure respectively.
- e. Foreign Exchange transactions in relation to receipt of donations / contributions accounted for at the exchange rates prevalent on the date of transaction, exchange differences related to amounts receivable arising on account of fluctuation in exchange rates are not separately recognized.

NOTES ON ACCOUNTS

The Trust had Registered with Income Tax department as charitable institution under section 12 A of Income Tax Act vide No. Hqrs.-I/14/12A/DIT (E) 2003 conditions/ required for exemption of income, consequently the income of the Trust is exempted from Tax.

There are no contingent liabilities or claims due.

Figures have been regrouped wherever necessary and rounded off to nearest rupee.

For SAMPATH & RAMESH

Chartered Accountants

Sd/-

(A.KRISHNA REDDY)

(Dr.D.SURYAKUMARI)

Partner

For CENTRE FOR PEOPLE'S FORESTRY

Sd/-

Director

Place: Hyderabad

Date: 10-07-2009



CENTRE FOR PEOPLE'S FORESTRY - CPF

H.No.12-13-483/39, Street No.14, Tarnaka, Secunderabad - 500 017

CONSOLIDATED RECEIPTS & PAYMENTS ACCOUNT DURING THE PERIOD FROM 01.04.2008 to 31.03.2009

RECEIPTS	31.03.2009 Amount Rs	31.03.2008 Amount Rs	PAYMENTS	31.03.2009 Amount Rs	31.03.2008 Amount Rs
Opening Balance			Strengthening Community Forest Management Initiatives (Novib)	8,495,243	8,084,746
Cash in Hand	10,063	12,008	Promotion of Forest based livelihoods (Ford Foundation)	2,460,044	2,143,227
Cash at State Bank of India	792,855	1,481,231	Enabling Practical Just and Sustainable Forest Use (IIED)	540,374	889,920
Cash at Corporation Bank	158,887	133,045	Sustainable Management of Fodder Resources (SDC-IC)	940,902	1,204,324
Cash at Corporation Bank (SDTT A/c)	3,345,718	948,841	Promoting Cross Learning in CFM in India (Novib)	146,000	475,282
Fixed Deposits with SBI Lalaguda Branch	2,053,170	5,130,668	Orissa & Jharkhand Forestry Programme (Novib)	4,918,523	3,863,557
Grant received towards:			Strengthening VSSs (ASW)	93,002	97,519
Strengthening Community Forest Management Initiatives			Strengthening VSSs (AEI)	765,017	-
From Oxfam Novib - Netherlands	7,720,860	6,998,263	Forestry system for fodder generation & management (Winrock)	480,000	720,000
Orissa & Jharkhand Forestry Programme			Enhancement of Livelihoods through Rock Bee Honey Harvesting	2,781,372	520,197
From Oxfam Novib - Netherlands	6,136,710	1,727,244	Training on Rock Bee Honey Harvesting (GCC)	65,507	185,463
Enabling Practical Just and Sustainable Forest Use			Embroidery Project (AP Forest Academy)	57,427	93,831
International Institute for Environment and			Value Addition and Marketing of NTFP's (ODI)	-	387,013
Development (IIED), UK	490,313	893,405	Fodder Project (APRLP)	-	150,000
Sustainable Management of Fodder Resources			General Activities	10,200	41,142
Swiss Agency for Development and Cooperation (SDC-IC)	963,039	997,720	Deposits		
Reclamation of grazing land and establishment of agro			Telephone Deposit		2,250
forestry system for fodder generation & management			Rental Deposit		32,400
Winrock International India	480,000	720,000	Advances		
Promotion of Forestry Based Livelihoods			Programme Advance	6,593	10,471
The Ford Foundation	2,494,692	2,495,817	Travel Advances	5,379	16,156
Strengthening VSSs			Staff Advances		20,728
ASW, Berlin	100,000	99,900	Return of TDS 2007-08	11,060	
Balance c/f	24,746,307	21,638,142	Balance c/f	21,776,643	18,938,226



CENTRE FOR PEOPLE'S FORESTRY - CPF

H.No.12-13-483/39, Street No.14, Tarnaka, Secunderabad - 500 017

CONSOLIDATED RECEIPTS & PAYMENTS ACCOUNT DURING THE PERIOD FROM 01.04.2008 to 31.03.2009

RECEIPTS	31.03.2009 Amount Rs	31.03.2008 Amount Rs	PAYMENTS	31.03.2009 Amount Rs	31.03.2008 Amount Rs
Balance b/f	24,746,307	21,638,142	Balance b/f	21,776,643	18,938,226
Strengthening VSSs			Training in Livehood enhancement (ARIAS)	-	137,597
AEI, Luxembourg.	801,947				
Enhancement of Livelihoods through Rock					
Bee Honey Harvesting			By Closing Balance		
Sir Dorabji Tata Trust (SDTT)		2,920,000	Cash in Hand	10,294	10,063
Girijan Cooperative Corporation		186,165	Cash at SBI Lalaguda Branch	652,700	792,855
AP Forest Academy	78,196	74,414	Cash at Corporation Bank, Tarnaka Branch	86,602	158,887
ARIAS Society		186,428	Cash at Corporation Bank, Tarnaka Branch (SDTT A/c)	651,299	3,345,718
commissioner APRLP		150,000	Fixed Deposits with SBI Lalaguda Branch	3,000,000	2,053,170
Refund of TDS		11,060			
Bank Interest					
On SB Account with SBI	74,089	71,002			
On Fixed Deposits	340,373	137,751			
On SB Account with Corporation Bank (Non-FC)	2,169	3,862			
On SB Account with Corporation Bank (SDTT a/c)	58,179	29,492			
Refund of Advances					
Programme Advances Refunded	76,278	28,200			
	26,177,538	25,436,516		26,177,538	25,436,516

As per our report of even date attached

for SAMPATH & RAMESH
Chartered Accountants

Sd/-
(A.KRISHNA REDDY)
Partner

for CENTRE FOR PEOPLE'S FORESTRY

Sd/-
(Dr.D.SURYAKUMARI)
Director

Sd/-
(Dr.URMILA PINGLE)
Managing Trustee

PLACE : HYDERABAD
DATE : 10-07-2009.



CENTRE FOR PEOPLE'S FORESTRY - CPF

H.No.12-13-483/39, Street No.14, Tarnaka, Secunderabad - 500 017

CONSOLIDATED INCOME & EXPENDITURE ACCOUNT FOR THE YEAR ENDING 31.03.2009

PARTICULARS	Schedule No	31.03.2009 Amount Rs	31.03.2008 Amount Rs
INCOME:			
Grant Received from			
Oxfam Novib - Netherlands	8	13,857,570	8,725,507
International Institute for Environment and Dev.(IIED),UK		490,313	893,405
Swiss Agency for Development and Cooperation (SDC-IC)		963,039	997,720
Winrock International India		480,000	720,000
The Ford Foundation, New Delhi		2,494,692	2,495,817
ASW, Berlin		100,000	99,900
AEI, Luxembourg.		801,947	
Sir Dorabji Tata Trust (SDTT)			2,920,000
AP Forest Academy		78,196	74,414
Girijan Cooperative Corporation			186,165
Commissioner APRLP			150,000
Other Income:			
Resource Fee/Subscriptions	9		207,805
Bank Interest	10	474,810	242,107
		19,740,567	17,712,840
EXPENDITURE:			
Strengthening Community Forest Management Initiatives (Novib)	11	8,394,053	7916454.5
Promotion of Forest based livelihoods (Ford Foundation)	12	2,370,319	2143227
Incorporating New Institutional Arrangements - (ODI)		-	387013
Enabling Practical Just and Sustainable Forest Use (IIED)	13	540,374	889920
Sustainable Management of Fodder Resources (SDC-IC)	14	940,902	1204324
Flood Relief Activity - (Oxfam Novib)		-	0
Orissa & Jharkhand Forestry Programme (Novib)	15	4,798,129	3749043
Promoting Cross Learning in CFM in India (Novib)	16	146,000	475282
Strengthening VSSs (ASW)		93,002	97519
Forestry system for fodder generation & management (Winrock)	17	480,000	720000
Strengthening VSSs (AEI)	18	715,567	
Enhancement of Livelihoods through Rock Bee Honey			
Harvesting - (SDTT)	19	2,781,372	520197
Trainings on Sustainable and Safe Practices of Rock Bee			
Honey Harvesting (GCC)		65,507	185463
Fodder Project (APRLP)		-	150000
Training on Livelihood enhancement (ARIAS)		-	137597
Embroidery Project (AP Forest Academy)		57,427	93831
General Activities		10,200	41142
Depreciation	4	329,031	352,593.89
		21,721,883	19,063,606
Surplus/Deficit for the year (Transfer to Balance Sheet)		(1,981,316)	(1,350,766)

As per our report of even date attached

for SAMPATH & RAMESH
Chartered Accountants

Sd/-
(A.KRISHNA REDDY)
Partner

PLACE : HYDERABAD
DATE : 10-07-2009.

for CENTRE FOR PEOPLE'S FORESTRY

Sd/-
(Dr.D.SURYAKUMARI)
Director

Sd/-
(Dr.URMILA PINGLE)
Managing Trustee



CENTRE FOR PEOPLE'S FORESTRY - CPF

H.No.12-13-483/39, Street No.14, Tarnaka, Secunderabad - 500 017

CONSOLIDATED BALANCE SHEET AS AT 31.03.2009

PARTICULARS	Schedule No	AS ON 31.03.2009	AS ON 31.03.2008
SOURCE OF FUNDS:			
Corpus Fund	1	4,000	4,000
Reserves & Surplus			
Specific Reserves	2	5,856,101	7,837,418
General Reserves	3	139,152	139,152
		5,999,253	7,980,570
APPLICATION OF FUNDS			
Fixed Assets:	4		
Gross Block		1,714,672	1,706,507
Less: Depreciation		329,031	352,594
Net Block		1,385,641	1,353,913
Current Assets, Loans & Advances			
Deposits and Advances	5	212,717	265,963
Cash and Bank Balances	6	4,400,895	6,360,693
		4,613,612	6,626,656
Less: Current Liabilities & Provisions			
Current Liabilities	7	-	-
Net Current Assets		4,613,612	6,626,656
Miscellanies exp to the expenditure A/c adjusted written off		-	-
		5,999,253	7,980,570
		-	-

As per our report of even date attached

(0)

for SAMPATH & RAMESH
Chartered Accountants

for CENTRE FOR PEOPLE'S FORESTRY

Sd/-
(A.KRISHNA REDDY)
Partner

Sd/-
(DR.D.SURYAKUMARI)
Director

Sd/-
(DR.URMILA PINGLE)
Managing Trustee

PLACE : HYDERABAD
DATE : 10.07.2009



CENTRE FOR PEOPLE'S FORESTRY - CPF

H.No.12-13-483/39, Street No.14, Tarnaka, Secunderabad - 500 017

SCHEDULES FORMING PART OF BALANCE SHEET AS AT 31.03.2008

PARTICULARS	Schedule	AS ON	AS ON
	No	31.03.2009	31.03.2008
Corpus Fund	1	4,000	4,000
		4,000	4,000
Reserves & Surplus			
Specific Reserve	2	7,837,417	9,188,184
Add/less: During the Year (Surplus/Deficit)		1,981,316	1,350,766
(Excess of Expen. over Income)			
		5,856,101	7,837,417
General Reserve	3	129,321	129,321
Add/less: During the Year (Surplus/Deficit)		9,831	9,831
		139,152	139,152
Deposits and Advances	5		
Telephone Deposit		12,250	12,250
Rental Deposit		62,400	62,400
Programme Advances		9,540	10,471
Travel Advances - (Annexure -2)		5,379	41,256
Staff Loans - (Annexure - 3)		80,500	107,998
Tax Deducted at Source (TDS)		42,648	31,588
		212,717	265,963
Cash & Bank Balances	6		
Cash in Hand		10,294	10,063
Cash at SBI Lalaguda		652,700	792,855
Cash at Corporation Bank, Tarnaka Branch		86,602	158,887
Cash at Corporation Bank (SDTT A/c)		651,299	3,345,718
Fixed Deposits with SBI Lalaguda Branch (Annexure - 4)		3,000,000	2,053,170
		4,400,895	6,360,693
Current Liabilities	7		
TDS Payable			
Payables under CFM Programme:			
Grants payable to Groups		-	-
Audit Fee Payable		-	-
Mainstreaming Hiv/Aids Concerns		-	-
Payables under ODI Project:			
Workshop Documentation Charges		-	-
Direction of Field Work		-	-



CENTRE FOR PEOPLE'S FORESTRY - CPF

H.No.12-13-483/39, Street No.14, Tarnaka, Secunderabad - 500 017

SCHEDULES FORMING PART OF INCOME & EXPENDITURE ACCOUNT FOR THE YEAR ENDING 31.03.2009

PARTICULARS	Schedule No	31.03.2009 Amount Rs.	31.03.2008 Amount Rs.
Grant Received from Oxfam Novib, Netherlands	8		
Community Forest Management Initiatives		7,720,860	6,998,263
Flood Relief Activity			
Promoting Cross Learning in CFM in India			
Orissa & Jharkhand Forestry Programme		6,136,710	1,727,244
		13,857,570	8,725,507
Resource Fees/Consultancies/Subscriptions	9		
Resource Fee Received			186,428
Subscriptions for Maa Adavi News Letter		-	-
Subscriptions for Resource Material		-	-
		-	186,428
Bank Interest	10		
Fixed Deposits with SBI (FC)		340,373	137,751
SB Account with SBI (FC)		74,089	71,002
SB Account with Corporation Bank (NFC)		2,169	
SB Account with Corporation Bank SDTT)		58,179	33,354
		474,810	242,107
Community Forest Management Initiatives - (Oxfam Novib)	11		
Facilitation Cost to Groups			448,000
Support to VSS			
Trainings/Meetings		-	-
Salary to Programme Executives		195,100	188,359
Travel to Programme Executives		67,779	65,562
Establishment of GCC Products outlet		-	-
VSS Information Centres Maintenance		55,047	-
VSS Level Workshop on Mainstreaming HIV/AIDS Concerns		280,864	147,260
		598,790	401,181
Salaries & Allowances		3,327,734	3,083,201
Expenses - Non Recurring			11,949
Expenses - Recurring			
Office Rent, Water and Electricity		253,802	240,860
Telephone Expenses		83,195	121,560
Printing & Stationery		85,511	75,089
Office Maintenance & Upkeep		90,285	47,113
Guests & Hospitality		50,029	37,857
Computers and Networking maintenance		87,679	36,300
Internet and Website Maintenance		37,629	36,344
Vehicle Maintenance		67,555	57,445
Local Conveyance		47,321	53,742
Annual Calendars		61,280	85,844
Staff Annual Retreat for all staff members		37,481	32,026
Audit Fee		18,708	33,708
Postage & Telegrams		29,865	44,673
Books for Library		20,877	26,132
Contingencies		32,988	45,127
Bank Charges		17,940	22,950
		1,022,145	996,770
Programme Expense			
Mainstreaming HIV/AIDS Concerns - workshops at State/ Regional level		-	178,984
Information Bulletin on Mainstreaming HIV/AIDS		-	38,136
Travel Expenses		308,084	328,581



CENTRE FOR PEOPLE'S FORESTRY - CPF

H.No.12-13-483/39, Street No.14, Tarnaka, Secunderabad - 500 017

SCHEDULES FORMING PART OF INCOME & EXPENDITURE ACCOUNT FOR THE YEAR ENDING 31.03.2009 Contd....

PARTICULARS	Schedule No	31.03.2009 Amount Rs.	31.03.2008 Amount Rs.
Documentation		114,784	68,557
BOT Meetings		120,688	111,060
Annual Partners Meeting		261,270	424,473
Printing of Annual Report		184,448	206,532
Resource Material Development		82,226	69,800
Strengthening CBO's & NGOs		-	-
Advocacy & Lobbying /Campaigns		102,589	212,721
Exposure Visits		48,790	106,210
Staff Capacity Building		60,159	159,340
Reports & Publications		147,157	19,897
Action Research/Studies		126,527	126,290
Honorarium to Volunteers at GCC sales Centres		19,276	
Adda leaf activity in Orissa		308,000	
External Evaluation		706,181	
Consultancy charges for Social Security		1,400	
Information and Dissemination		23,028	
Unforeseen Initiative Fund		170,286	142,361
Training cum Exposure visit -GCC			30,254
		2,784,893	2,223,196
Livelihood Enhancement through Adda Leaf			
Coordination & Administration At CPF Level			
Salary to Project Coordinator		173,403	170,462
Travel		53,771	62,139
Administration Expenses		3,014	24,053
		230,188	256,654
Livelihood Enhancement through Honey Harvesting			
Meetings with NGO associated with Honey Collectors		-	111,954
Documentation		-	2,009
Facilitation cost to NGOs			
Centre for Human Resource Centre (CHRD)		86,740	28,400
Conservation of Nature through Rural Awakening (CONARE)		86,740	28,400
Travel Expenses		47,653	30,666
		221,133	201,429
Sustainable Forestry Initiatives			
Honorarium to RM Volunteers, Srisailam		53,720	11,050
Insurance to RM, Visakhapatnam		17,010	7,950
Resource monitoring Kit		10,049	2,585
Workshops		6,820	142,522
Accidental Insurance to RM Volunteers		5,820	-
Embroidery Project		-	-
Salary to Coordinator		95,944	96,411
Travel		19,807	33,557
		209,170	294,075



CENTRE FOR PEOPLE'S FORESTRY - CPF

H.No.12-13-483/39, Street No.14, Tarnaka, Secunderabad - 500 017

SCHEDULES FORMING PART OF INCOME & EXPENDITURE ACCOUNT FOR THE YEAR ENDING 31.03.2009 Contd....

PARTICULARS	Schedule No	31.03.2009 Amount Rs.	31.03.2008 Amount Rs.
Initiation of work in the State of Orissa			
Field visits expense to CPF team			
Sal leaf plate making machines			
Exposure visit			
		8,394,053	7,916,455
Promotion of Forest based livelihoods through Resource Centres and Networking - (The Ford Foundation)	12		
Facilitation Cost to Partner NGOs registered under FCRA			
Gramabhyudaya - Visakhapatnam		168,095	370,900
Samyogitha - Srikakulam		89,050	170,600
Vyavasayaka Mariyu Sanghika Abiruddi Samstha (ASDS) - Khammam Dt		133,225	250,000
Centre for Human Resource Development - (CHRD), Kadapa		65,390	324,700
Centre for Education and Agriculture Development (CEAD), Nirmal		-	-
Society for Environmental Education and Development - (SEED), Medak		58,500	-
Rural Environment and Development Society - (REDS), Ananthapur		-	113,600
Spandana Cultural Organization for Progressive Education (SCOPE), Hyderabad		100,000	-
		614,260	1,229,800
Coordination & Administration			
Salaries & Allowances		400,630	541,989
Travel & Conveyance		8,199	43,578
		408,829	585,567
Office Costs			
Audit Fee		15,000	16,854
Guests & Hospitality		10,651	16,264
Office Maintenance		30,261	4,091
Postage & Telephone		14,317	26,028
Printing & Stationery		7,474	15,256
Bank charges		1,609	3,760
		79,312	82,253
Training & Programme Costs			
Marketing Research		205,707	250
Resource Material Development			26,300
Resource Person fee for Book Keeping		21,393	16,750
Review Meetings		20,197	-
Documentation		250,250	201
Enterprises Grounding Expenses		73,500	202,106
		1,267,918	245,607
		2,370,319	2,143,227
Incorporating New Institutional Arrangements - (ODI)			
Facilitation Cost to Partner NGOs registered under FCRA			
Rural Environment and Development Society - (REDS), Ananthapur			386,000
Direction of Field Work		-	-
National Workshop		-	-
Administration Expenses			1,013
		-	387,013



CENTRE FOR PEOPLE'S FORESTRY - CPF

H.No.12-13-483/39, Street No.14, Tarnaka, Secunderabad - 500 017

SCHEDULES FORMING PART OF INCOME & EXPENDITURE ACCOUNT FOR THE YEAR ENDING 31.03.2009 Contd....

PARTICULARS	Schedule No	31.03.2009 Amount Rs.	31.03.2008 Amount Rs.
Forest Governance Learning Group - Enabling Practical Just and Sustainable Forest Use - (IIED)	13		
Grants paid to Partner NGO Registered under FCRA			
Vyavasayaka Mariyu Sanghika Abiruddi Samstha (ASDS) - Khammam Dt		100,636	
Technical Staff Costs		182,250	265,200
Administrative Staff Costs		57,967	-
Staff Welfare			51,119
Computers Maintenance			2,680
Office Maintenance		250	5,000
Telephone/Electricity Expenses			6,000
Publications tool guides/trainings Material		199,271	-
National Conference			512,921
Travel		-	47,000
		540,374	889,920
Sustainable Management of Fodder Resources by Stakeholders - (SDC-IC)	14		
Grants paid to Partner NGO Registered under FCRA			
Centre for Human Resource Development (CHRD)		399,191	501,250
Consultancy to Technical advisor		78,000	60,359
Travel to Consultants		6,922	9,043
Salary to Project Assistant		28,600	126,000
Travel		75	148,411
Fodder Workshop		101,185	109,831
Video process documentation		149,340	33,289
Administration & Audit Expenses		9,589	33,056
Resource Material Development		168,000	183,085
		940,902	1,204,324
Promoting Cross Learning in CFM in India (Novib)	16		
Salary to Programme Associate			75,913
Resource Material Development		146,000	90,326
Workshop for testing 'tool kit'			24,671
Training Expenses			276,527
Administrative Overheads			7,845
		146,000	475,282



CENTRE FOR PEOPLE'S FORESTRY - CPF

H.No.12-13-483/39, Street No.14, Tarnaka, Secunderabad - 500 017

SCHEDULES FORMING PART OF INCOME & EXPENDITURE ACCOUNT FOR THE YEAR ENDING 31.03.2009 Contd....

PARTICULARS	Schedule No	31.03.2009 Amount Rs.	31.03.2008 Amount Rs.
Orissa & Jharkhand Forestry Programme	15		
Grants paid to Partner NGO Registered under FCRA			
Society for Agriculture, Health & Education, Animal Husbandry & Rural Development Action (SAHARA) Nabarangpur, Orissa		1,054,000	650,000
Gramya Chetana Parisad (GCP), Mayurbhanj, Orissa		-	538,500
Organisation for Rural Reconstruction & Integrated Social Service Activities (ORRISSA), Bhubaneswar, Orissa		872,652	677,000
Women Organisation For Rural Development (WORD), Kenjhar, Orissa		1,054,000	677,000
		2,980,652	2,542,500
Non recurring expenses			1,924
Office expenses-Recurring			
Audit fee		16,854	3,258
Bank charges		5,265	4,039
Contingencies		11,219	2,833
Guests and hospitality		24,908	332
Local conveyance		9,508	925
Office maintenance		12,352	10,239
Postage		13,567	
Office rent and elimities		50,600	20,730
Printing and stationery		36,082	35,867
Books for library		3,252	
Telephone expenses		70,032	7,556
		253,639	87,703
Programme expenses			
Advisory committee meetings			13,251
Appraisal and monitoring visits			133,848
Consultation meetings			153,173
Trainers Training and Annual Partners Meeting		157,272	
Exposure visits		100,243	38,568
Information and Dissemmination		10,917	3,061
Mainstreaming of HIV/AIDS concerns		79,529	109,993
Orientation meeting			135,528
Research & Studies documentation		45,923	
Resource material Development		46,681	36,093
Stake holders consultation meetings			2,052
Documentation		12,500	
Travel & Monitoring Visits		276,086	243,583
Unforeseen Initiative Fund		165,050	
		894,201	869,150
Orissa Staff Salaries & Allowances			
Staff Salaries & Allowances		352,463	249,690
Jharkhand Initiatives			
Staff Salaries & Allowances to Programme Officer		201,714	
Travel /monitoring visits		21,254	
Research & Studies (travel exp. and consultancy charges to Researchers)		94,206	
		317,174	
		4,798,129	3,749,043



CENTRE FOR PEOPLE'S FORESTRY - CPF

H.No.12-13-483/39, Street No.14, Tarnaka, Secunderabad - 500 017

SCHEDULES FORMING PART OF INCOME & EXPENDITURE ACCOUNT FOR THE YEAR ENDING 31.03.2009 Contd....

PARTICULARS	Schedule No	31.03.2009 Amount Rs.	31.03.2008 Amount Rs.
Strengthening VSSs (AEI)	18		
Grants paid to Partner NGO Registered under FCRA			
Gramabhyudaya - Visakhapatnam		95,000.00	
Samyogitha - Srikakulam		190,000.00	
		285,000.00	
Independent monitoring on performance			
Honorarium ,Travel and food expnses		77,437.00	
Orientation Meeting		5,531.00	
Collection & dissemination of information		80.00	
		83,048.00	
Coordination Costs at Vanasamakhyha			
Honorarium to VS Programme Executive		47,400.00	
Travel to VS Programme Executive		13,243.00	
		60,643.00	
Coordination Costs At CPF Level			
Programme Officer salary		238,216.00	
Travel Costs		48,560.00	
Computer with Accessories		49,550.00	
		336,326	
		765,017	
Winrock International India (Fodder Project)	17		
Grants paid to Partner NGO Registered under FCRA			
Conservation of Nature through Rural Awakening (CONARE)		480,000	718,115
Bank charges			1,885
		480,000	720,000



CENTRE FOR PEOPLE'S FORESTRY - CPF

H.No.12-13-483/39, Street No.14, Tarnaka, Secunderabad - 500 017

SCHEDULES FORMING PART OF INCOME & EXPENDITURE ACCOUNT FOR THE YEAR ENDING 31.03.2009 Contd....

PARTICULARS	Schedule No	31.03.2009 Amount Rs.	31.03.2008 Amount Rs.
Enhancement of Livelihoods through Rock Bee Honey Harvesting (SDTT)	19		
Grant Paid Partner NGOs			
Centre for Human Resource Development (CHRD), Kadapa		1,143,250	-
Conservation of Nature through Rural Awakening		1,219,750	-
		2,363,000	-
PROJECT ACTIVITIES			
Awareness Creation by Folk Arts performances			44,942
Identification of beneficiaries & baseline data		1,000	17,635
Imparting/upgrading skills to/of beneficiaries			
Exposure visit for field level functionaries			51,550
Exposure visit cum training prog. to Sales facilitators		3,148	55,004
Training on value addition of Amla, Soapnut and Tamarind			26,853
Trainings to 200 Adda leaf plate makers			
Training to Honey collectors on Honey Harvest		9,360	
Training on Value Addition		35,081	
Project Steering Committee Meeting		8,880	13,193
Support Services		37,581	25,007
Review meetings with project steering committee			
Consultancy charges and travel expenses to ATREE			42,084
Video documentation		103,833	
STAFF COSTS			
Salary to Coordinator		136,348	126,733
Travel Costs		57,948	62,306
Administration costs		18,992	54,890
Contingencies		6,201	
		418,372	520,197
		2,781,372	520,197



CENTRE FOR PEOPLE'S FORESTRY - CPF

H.No.12-13-483/39, Street No.14, Tarnaka, Secunderabad - 500 017

STATEMENT OF FIXED ASSETS AS ON 31.03.2009 (SCHEDULE 4)

S.No.	DESCRIPTION OF ASSETS	GROSS BLOCK			DEPRECIATION				NET BLOCK	
		Cost up to 31-03-2008	Additions/ deductions	Cost up to 31-03-2009	Dep. Rates	up to 31-03-2008	For the year	Total	As at 31-03-2009	3/31/2008
	Oxfam Novib-Core									
1	Computers	110558		110558	60%	383132	66335	449467	44223	110558
2	Office Equipment	217453	101190	318643	10%	68574	31430	100004	287213	217453
3	Furniture & Fixtures	432084		432084	10%	76106	43208	119314	388876	432084
4	Vehicles	367180		367180	15%	181942	55077	237019	312103	367180
	Sub Total	1127275	101190	1228465		709754	196050	905804	1032415	1127275
	Oxfam Novib-Orissa									
1	Computers	34370	31450	65820	60%	14730	39492	54222	26328	34370
2	Office Equipment	26806	39313	66119	10%	2884	6415	9299	59704	26806
3	Furniture & Fixtures	33937	17186	51123	10%	1787	5112	6899	46011	33937
4	Vehicles	0	32445	32445	15%	0	4867	4867	27578	0
	Sub Total	95113	120394	215507		19401	55886	75287	159621	95113
	Ford Foudation	0		0		0		0	0	0
1	Computers	14894	61600	76494	60%	118088	45896	163984	30598	14894
2	Office Equipment	75318	28125	103443	10%	22562	10344	32906	93099	75318
3	Furniture & Fixtures	3547		3547	10%	1063	355	1418	3192	3547
	Sub Total	93759	89725	183484		141713	56595	198308	126889	93759
	AEI-Project	0		0		0		0	0	0
1	Computers	0	49450	49450	60%	0	14835	14835	34615	0
	Sub Total	0	49450	49450		0	14835	14835	34615	0
	SDTT - Non - FC	0		0		0		0	0	0
1	Two Wheeler	37766		37766	15%	10266	5665	15931	32101	37766
	Sub Total	37766	0	37766		10266	5665	15931	32101	37766
	Grand Total	1353913	360759	1714672		881134	329031	1210165	1385641	1353913

As per our report of even date attached

for SAMPATH & RAMESH
Chartered Accountants

Sd/-
(A.KRISHNA REDDY)
Partner

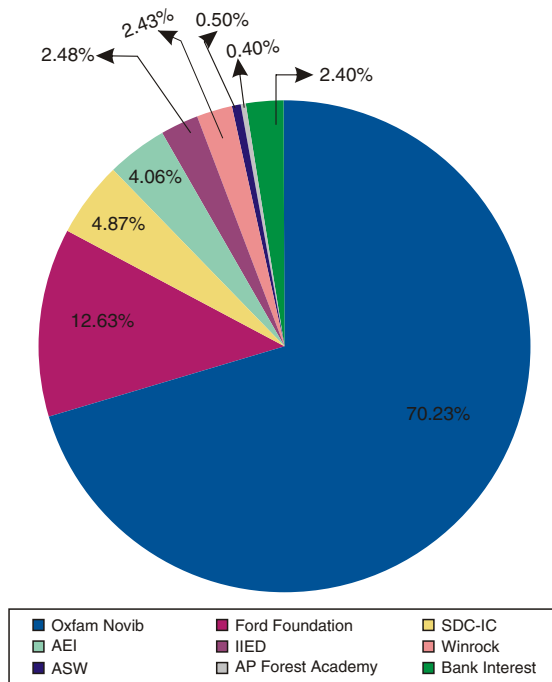
for CENTRE FOR PEOPLE'S FORESTRY

Sd/-
(Dr.D.SURYAKUMARI)
Director

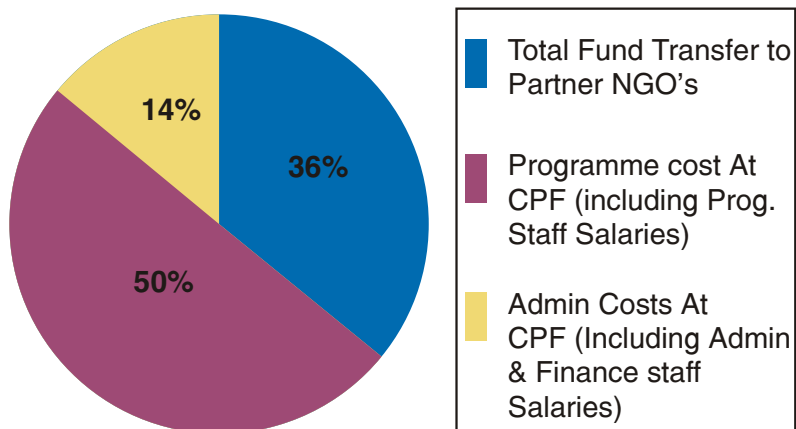
Sd/-
(Dr.URMILA PINGLE)
Managing Trustee

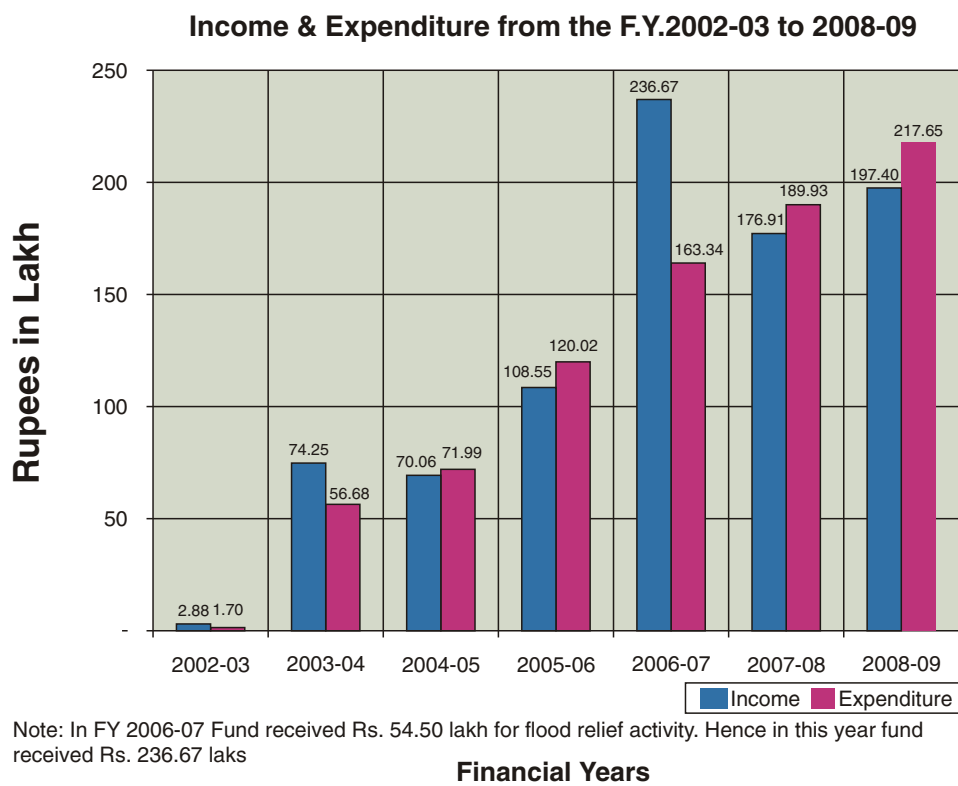
PLACE : HYDERABAD
DATE : 10-07-2009.

Summary of Receipts (2008-09)



Utilisation of Funds (2008-09)





12. Financial Partners

Oxfam Novib (Core support)

The Ford Foundation (Core support)

Aktionsgemeinschaft Solidarische Welt.E.v (ASW - Berlin)

Intercooperation (IC)

Centre for World Solidarity (CWS)

International Institute for Environment and Development (IIED)

Sir Dorabji Tata Trust (SDTT)

Capitalisation of Livestock Programme Experiences, India (CALPI)

Andhra Pradesh Forest Department (APFD)

Winrock International India

AIDE A L'ENFANCE DE L'INDE (AEI)

UK India Education and Research Initiative (UKERI)

13. Board Members

Managing Trustee

Dr. Urmila Pingle

Medical Anthropologist and Natural Resource
and Tribal Development Policy Analyst
Hyderabad

Trustees

Dr. K. Kameswara Rao

Department of Environmental Sciences
Andhra University, Visakhapatnam

Dr. Sheela Prasad

Professor, Geography
University of Hyderabad, Hyderabad

Dr. Manmohan Yadav

Associate Professor, Chairperson - MDP
Indian Institute of Forest Management (IIFM)
Bhopal

Prof. V. Ratna Reddy

Senior Fellow (Professor)
Centre for Economic and Social Studies (CESS)
Hyderabad

Mr. Sanjay Upadhyay

Founder and Managing Partner
Enviro-Legal Defence Firm (ELDF)
Noida 201301, Uttar Pradesh

Dr. N. H. Ravindranath

Chairman - Centre for Sustainable Technologies
Associate Faculty - Centre for Ecological Sciences
Indian Institute of Science, Bangalore

Ms. Raktima Mukherjee

Programme Director

Indian Institute of Bio-Social Research
and Development (IBRAD), Kolkata

Ex-officio Secretary

Dr. D. Suryakumari

Director, Centre for People's Forestry
Secunderabad

14. Publications

1. A handbook on Forest Rights Act 2006 Implementation (in Telugu), 2009
2. A document on CPF's Strategic Plan 2009-2015, 2009
3. Livelihood Enhancement through Adda Leaf Plate Making Activity in Visakhapatnam Forest Circle, 2008
4. A report on Assessment of the Performance of VSSs in CPF Project Area, 2008
5. Evaluation Report of Core Programme of Centre for People's Forestry, 2008
6. Action Tools for Result-oriented Action in Participatory Forest Management, ISBN: 978-81-906691-5-3, 2008
7. Striking a balance: CPF's experience on bringing in convergence among concerned stakeholders towards livestock-based livelihoods and use of natural resources, 2008
8. Turning a New Leaf, ISBN: 978-81-906691-6-0, 2008
9. Non-Timber Forest Produce in Central India: Governance, Challenges and Opportunities, ISBN: 978-81-906691-0-8, 2008
10. NTFP Enterprise and Forest Governance in Andhra Pradesh, Madhya Pradesh and Orissa: Bamboo, Mahua, Tendu Leaves, Tamarind & Sal Seed, ISBN: 978-81-906691-7-7 (SET), 2008
11. Participatory Forest Management: Training Manual for Facilitators, ISBN: 978-81-906691-4-6, 2007
12. Training Manual Series in Participatory Forest Management: Facilitation Skills, Conflict Resolution & Gender Mainstreaming, ISBN: 978-81-906691-3-9 (SET), 2007
13. Multi-stakeholder Workshop on Restoring Balance between Livestock-based Livelihood and Natural Resources, ISBN: 978-81-906691-2-2, 2007
14. Connecting Lives: Five Years in People's Forestry, ISBN: 978-81-906691-1-5, 2007
15. Consultation on Intervention of CPF in Orissa, 2007
16. Multi-stakeholder Consultation for Defining Micro-enterprise Friendly Forest Governance, ISBN: 978-81-905419-8-2, 2007
17. Biodiversity Register Process (Telugu), ISBN: 978-81-905419-8-5, 2005
18. National Consultation with Civil Society Organisation on Non-Timber Forest Produce Policy and Management, ISBN: 978-81-906691-8-4, 2005
19. Training Manual on Facilitation Skills to Community Extension Workers (CEWs) (Telugu), ISBN: 978-81-905419-7-8, 2005
20. Training Manual on Conflict Resolution (Telugu), ISBN: 978-81-905419-6-1, 2005
21. Training Manual on Gender Mainstreaming (Telugu), ISBN: 978-81-905419-5-4, 2005
22. Community Forestry Micro-plan Training Manual for Facilitators, ISBN: 978-81-905419-4-7, 2005
23. Monitoring by Stakeholders, ISBN: 978-81-905419-3-0, 2005

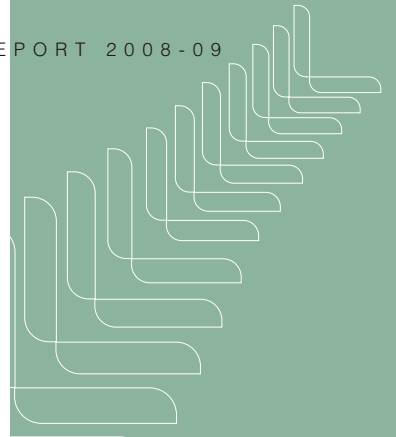
24. Proceedings of the National Conference on Dalit Concerns in Forestry, ISBN: 978-81-905419-2-3, 2004
25. Bamboo in VSS of Andhra Pradesh (Harvest, Marketing & Benefit Sharing), ISBN: 978-81-905419-1-6, 2003
26. Study on VSS Sustainability and the Role of GCC (NTFP marketing) in Connection with CFM in Andhra Pradesh, ISBN: 978-81-905419-0-9, 2003
27. Forest Biodiversity Registers, ISBN: 978-81-906691-9-1, 2002
28. Stakeholder Consultations on Community Forest Management, 2001

Films:

1. Striking a balance: CPF's experience on bringing in convergence among concerned stakeholders towards livestock-based livelihoods and use of natural resources, 2008
2. Same Leaves, New Grip: Enhancing Lives of Adda Leaf Collectors: A Collaborative Venture, 2008
3. A film on Non-Timber Product Markets for the Poor, 2005

15. Team CPF

Sl. No.	Name	Designation
1	Dr. D. Suryakumari	Director
2	Mr. K. Suresh	Senior Programme Officer, PFM
3	Mr. C. Vasu	Senior Programme Officer, SL
4	Mr. P. Bruslin Mento	Senior Programme Officer, IEC
5	Ms. T. Vasantha Kumari	Administrative Officer
6	Mr. Y. Rajasekhar	Finance Officer
7	Mr. C. Nagaraju	Programme Officer, PFM (AP)
8	Mr. P. Rajanikanth	Programme Officer, PFM - Gender & HIV & AIDS Concerns
9	Mr. Siba Prasad Sahu	Programme Officer, PFM (Orissa)
10	Ms. P. Vani	Programme Associate, Vanasamakhyia
11	Ms. B. Jalaja	Project Coordinator, Vanasamakhyia
12	Mr. Ashis K Gharai	Programme Officer, SL - Sustainable Forestry
13	Mr. Nirakar Pradhan	Programme Officer, SL - Appropriate Land Use
14	Mr. V. Balraj Gupta	Sr. Project Coordinator, SL
15	Mr. P. Ramesh Babu	Project Coordinator, SL - CHELE
16	Mr. Y. Nagaraju	Project Coordinator, SL - Sustainable Forestry
17	Mr. K. Satyanarayana	Project Coordinator, SL - Appropriate Land Use
18	Mr. A. Sridhar	Project Coordinator, SL - Appropriate Land Use
19	Mr. V Santosh Kumar	Project Coordinator, SL - Appropriate Land Use
20	Mr. E. Poorna Chander	Programme Officer, IEC - MIS
21	Ms. Diana Joseph	Programme Officer, IEC - Documentation & Analysis
22	Ms. Neelam Kispotta	Programme Officer, IEC - Communication
23	Mr. Akil Khan	Admin/ Accounts Associate, Orissa
24	Mr. Md. Khaleel	Administrative Associate
25	Ms. S. Rajyalaxmi	Cashier cum Accountant
26	Mr. P. Satyanarayana	Accounts Officer
27	Mr. D. Jangaiah	Office Assistant
28	Mr. R. Damodar Reddy	Driver cum Office Assistant
29	Mr. J. Bhaskar	Office Assistant
30	Mr. Hemanth Kumar Sahoo	Office Assistant, Orissa
31	Ms. U. Rama Devi	Helper
32	Ms. K. Uma	Helper



Thank you!

We take this opportunity to thank you and all our supporters. We would be more than glad to have you at our office for further collaboration and interaction.

